

LEA Name : Panther Valley SD
Address : 1 Panther Way
Lansford, PA 18232

County : Carbon
AUN Number : 121136603
LEA Type : SD

Annual Financial Report Accuracy Certification Statement

For Fiscal Year Ending

6/30/2017

Pennsylvania Department of Education
&

Office of Comptroller Operations

PDE-2056: Intermediate Unit

PDE-2057: School District, AVTS/CTC, Charter School,
and Special Program Jointure

CERTIFICATION: By signing this page I agree that the electronic data submitted is a complete and accurate statement of the financial operations and status of the local education agency for the fiscal year. It has been prepared in accordance with generally accepted accounting principles and established Commonwealth of PA reporting guidelines.



Chief School Administrator Signature

Date

11-2-2017

Date

11-2-2017

Date

Board Secretary Signature

Kenneth R Marx

Contact Person

marxk@panthervalley.org

Contact Person E-mail Address

(570)645-3176

Ext :

Contact Person Telephone Number

(570)645-3036

Contact Person Fax Number

Audit Certification
Annual Financial Report:
For Fiscal Year Ending **6/30/2017**
(Pursuant to PA School Code Section 218(b))

LEA Name : Panther Valley SD
AUN Number : 121136603
County : Carbon

Audit Certification Due: 12/31/2017

This certification is applicable to the Annual Financial Report data submitted through the Consolidated Financial Reporting System on: _____
Date

Auditing Firm:

Auditor Contact Name:

Auditor Phone:

Auditor E-mail:

CERTIFICATION: By signing this page I agree that the financial statements of the school have been properly audited as noted above pursuant to Article XXIV, and in the auditor's professional opinion, the Annual Financial Report (PDE-2057) submitted on the date referenced is materially consistent with the audited financial statements.

Chief School Administrator

Board Secretary

Signature

Date

Signature

Date

Kenneth R Marx

Contact Person

marxk@panthervalley.org

Contact Person E-mail Address

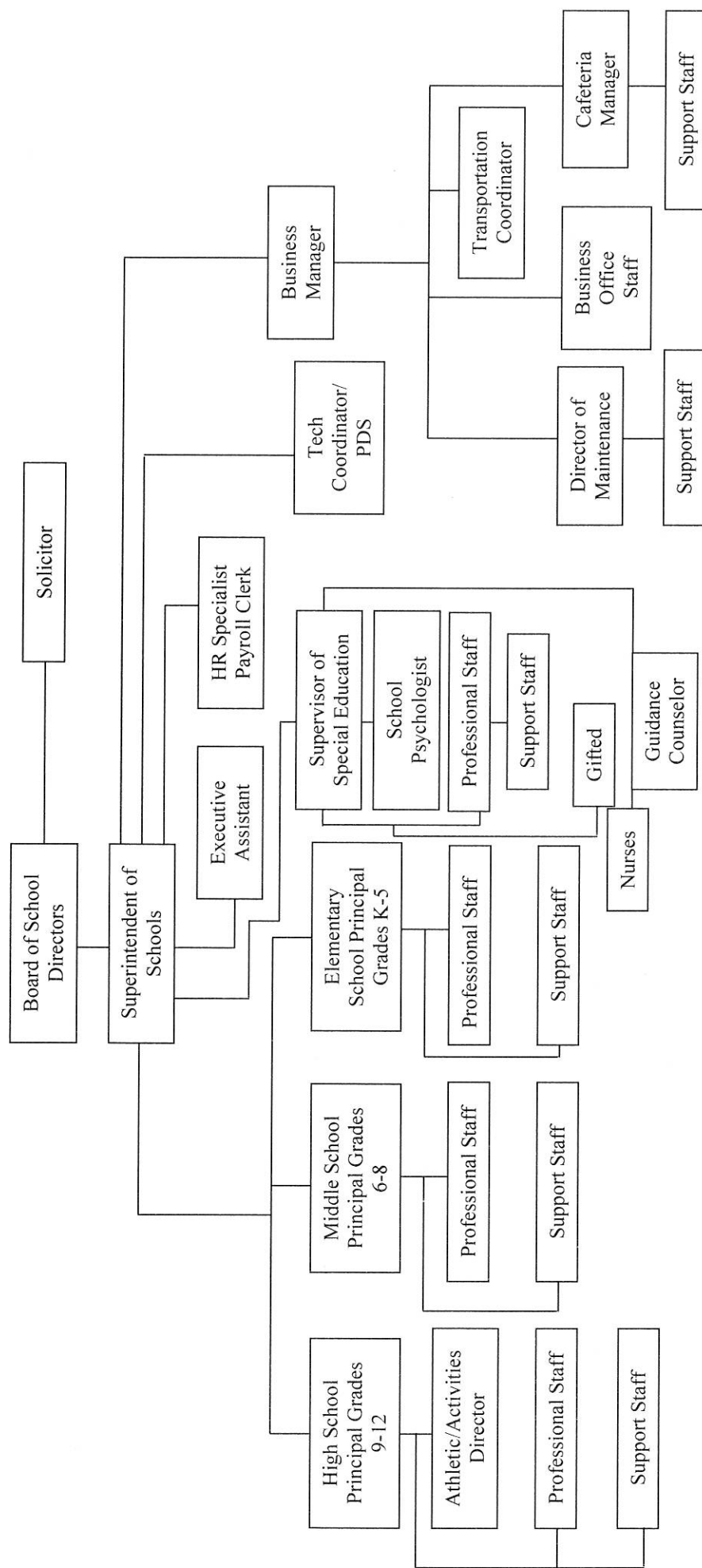
(570)645-3176

Ext :

Contact Person Telephone Number

(570)645-3036

Contact Person Fax Number



— Line responsibility (direct line supervision).

Staff relationships (communication and cooperation) are in effect throughout the district.

SUPPORT STAFF INCLUDES AIDES, CUSTODIANS, SECRETARIES, AND CAFETERIA EMPLOYEES.

<u>Val Number</u>	<u>Description</u>	<u>Justification</u>
50160	SOIN: All Governmental Fund General Obligation Bonds must include an amount for Interest Paid during Fiscal Year. Correct data or enter a justification.	Bonds without interest paid are newly issued.

LEA : 121136603 Panther Valley SD

Printed 11/3/2017 12:08:48 PM

Amounts Expressed in Whole Dollars		<u>General Fund</u> <u>(10)</u>	<u>Public Purpose Trust</u> <u>(27)</u>	<u>Other Compt Approved</u> <u>(28)</u>	<u>Athletic / Activity</u> <u>(29)</u>	<u>Capital Reserve (690.</u> <u>1850)</u> <u>(31)</u>
Assets And Deferred Outflows Of Resources						
Assets						
0100	Cash and Cash Equivalents	3,621,131				
0110	Investments					
0120	Taxes Receivable	2,957,482				
0130	Due From Other Funds					
0141	Due From Other Governments	100,969				
0142	State Revenue Receivable	753,077				
0143	Federal Revenue Receivable	22,399				
0145	Other Intergovernmental Revenue Receivable					
0146	Due from Primary Government					
0147	Due from Component Unit					
0150	Other Receivables	5,806				
0170	Inventories					
0180	Prepaid Expenses (Expenditures)					
0190	Other Current Assets					
Total Assets		\$7,460,864				
0910	Deferred Outflows of Resources					
Total Assets And Deferred Outflows Of Resources		\$7,460,864				

LEA : 121136603 Panther Valley SD

Printed 11/3/2017 12:08:48 PM

Amounts Expressed in Whole Dollars		<u>Capital Reserve (1431</u> <u>(32)</u>	<u>Other Capital Projects</u> <u>Fund</u> <u>(39)</u>	<u>Debt Service</u> <u>(40)</u>	<u>Permanent</u> <u>(90)</u>	<u>Total Governmental</u> <u>Funds</u>
Assets And Deferred Outflows Of Resources						
Assets						
0100	Cash and Cash Equivalents		806,326			4,427,457
0110	Investments					
0120	Taxes Receivable					2,957,482
0130	Due From Other Funds		528,674			528,674
0141	Due From Other Governments					100,969
0142	State Revenue Receivable					753,077
0143	Federal Revenue Receivable					22,399
0145	Other Intergovernmental Revenue Receivable					
0146	Due from Primary Government					
0147	Due from Component Unit					
0150	Other Receivables					5,806
0170	Inventories					
0180	Prepaid Expenses (Expenditures)					
0190	Other Current Assets					
Total Assets			\$1,335,000			\$8,795,864
0910	Deferred Outflows of Resources					
Total Assets And Deferred Outflows Of Resources			\$1,335,000			\$8,795,864

LEA : 121136603 Panther Valley SD

Printed 11/3/2017 12:08:48 PM

Amounts Expressed in Whole Dollars	<u>General Fund</u> <u>(10)</u>	<u>Public Purpose Trust</u> <u>(27)</u>	<u>Other Compt Approved</u> <u>(28)</u>	<u>Athletic / Activity</u> <u>(29)</u>	<u>Capital Reserve (690.</u> <u>1850)</u> <u>(31)</u>
Liabilities And Deferred Inflows Of Resources And Fund Balances					
Liabilities					
0400 Due to Other Funds	528,459				
0411 Due to Other Governments					
0412 Due to Primary Government					
0413 Due to Component Unit					
0420 Accounts Payable	328,529				
0430 Contracts Payable					
0440 Current Portion of Long-Term Debt					
0450 Short-Term Payables					
0461 Accrued Salaries and Benefits	1,958,885				
0462 Payroll Deductions and Withholding					
0480 Unearned Revenues					
0490 Other Current Liabilities					
Total Liabilities	\$2,815,873				
0950 Deferred Inflows of Resources	2,606,664				
Fund Balances					
0810 Nonspendable Fund Balance					
0820 Restricted Fund Balance					
0830 Committed Fund Balance					
0840 Assigned Fund Balance					
0850 Unassigned Fund Balance	2,038,327				
Total Fund Balances	\$2,038,327				
Total Liabilities, Deferred Inflows Of Resources And Fund Balances	\$7,460,864				

LEA : 121136603 Panther Valley SD

Printed 11/3/2017 12:08:48 PM

Amounts Expressed in Whole Dollars		<u>Capital Reserve (1431)</u> <u>(32)</u>	<u>Other Capital Projects</u> <u>Fund</u> <u>(39)</u>	<u>Debt Service</u> <u>(40)</u>	<u>Permanent</u> <u>(90)</u>	<u>Total Governmental</u> <u>Funds</u>
Liabilities And Deferred Inflows Of Resources And Fund Balances						
Liabilities						
0400	Due to Other Funds					528,459
0411	Due to Other Governments					
0412	Due to Primary Government					
0413	Due to Component Unit					
0420	Accounts Payable					328,529
0430	Contracts Payable					
0440	Current Portion of Long-Term Debt					
0450	Short-Term Payables					
0461	Accrued Salaries and Benefits					1,958,885
0462	Payroll Deductions and Withholding					
0480	Unearned Revenues					
0490	Other Current Liabilities					
Total Liabilities						\$2,815,873
0950	Deferred Inflows of Resources					2,606,664
Fund Balances						
0810	Nonspendable Fund Balance					
0820	Restricted Fund Balance		1,335,000			1,335,000
0830	Committed Fund Balance					
0840	Assigned Fund Balance					
0850	Unassigned Fund Balance					2,038,327
Total Fund Balances			\$1,335,000			\$3,373,327
Total Liabilities, Deferred Inflows Of Resources And Fund Balances			\$1,335,000			\$8,795,864

Amounts Expressed in Whole Dollars		<u>General Fund</u> <u>(10)</u>	<u>Public Purpose Trust</u> <u>(27)</u>	<u>Other Compt Approved</u> <u>(28)</u>	<u>Athletic / Activity</u> <u>(29)</u>	<u>Capital Reserve (690.</u> <u>1850)</u> <u>(31)</u>
Revenues						
6000	Revenue from Local Sources	10,866,392				
7000	Revenue from State Sources	13,782,039				
8000	Revenue from Federal Sources	1,081,266				
Total Revenues		\$25,729,697				
Expenditures						
1000	Instruction	17,004,692				
2000	Support Services	6,335,965				
3000	Operation of Non-Instructional Services	481,723				
4000	Facilities Acquisition, Construction and Improvement Services					
5110	Debt Service	2,369,540				
5130	Refund of Prior Year Revenues / Receipts	353				
Total Expenditures		\$26,192,273				
Excess (Deficiency) Of Revenues Over Expenditures		(\$462,576)				
Other Financing Sources (Uses)						
9110	Face Value of Bonds Issued					
9120	Proceeds from Refunding of Bonds	21,071,845				
9130	Bond Premiums					
9200	Proceeds from Extended-Term Financing					
9300	Interfund Transfers - IN					
9400	Sale of or Compensation for Loss of Fixed Assets					
9710	Transfers from Component Units					
9720	Transfers from Primary Governments					
9910	Other Financing Sources Not Listed in the 9000 Series					
9990	Insurance Recoveries					
5120	Debt Service – Refunded Bonds	20,726,915				
5150	Bond Discounts					
5200	Interfund Transfers – Out					
5300	Transfers Out to Component Units/Primary Governments					
Total Other Financing Sources (Uses)		\$344,930				

LEA : 121136603 Panther Valley SD

Printed 11/3/2017 12:08:50 PM

Amounts Expressed in Whole Dollars		<u>Capital Reserve (1431</u> <u>(32)</u>	<u>Other Capital Projects</u> <u>Fund</u> <u>(39)</u>	<u>Debt Service</u> <u>(40)</u>	<u>Permanent</u> <u>(90)</u>	<u>Total Governmental</u> <u>Funds</u>
Revenues						
6000	Revenue from Local Sources		4,088			10,870,480
7000	Revenue from State Sources					13,782,039
8000	Revenue from Federal Sources					1,081,266
Total Revenues			\$4,088			\$25,733,785
Expenditures						
1000	Instruction					17,004,692
2000	Support Services					6,335,965
3000	Operation of Non-Instructional Services					481,723
4000	Facilities Acquisition, Construction and Improvement Services		46,268			46,268
5110	Debt Service					2,369,540
5130	Refund of Prior Year Revenues / Receipts					353
Total Expenditures			\$46,268			\$26,238,541
Excess (Deficiency) Of Revenues Over Expenditures			(\$42,180)			(\$504,756)
Other Financing Sources (Uses)						
9110	Face Value of Bonds Issued					
9120	Proceeds from Refunding of Bonds					21,071,845
9130	Bond Premiums					
9200	Proceeds from Extended-Term Financing					
9300	Interfund Transfers - IN					
9400	Sale of or Compensation for Loss of Fixed Assets					
9710	Transfers from Component Units					
9720	Transfers from Primary Governments					
9910	Other Financing Sources Not Listed in the 9000 Series					
9990	Insurance Recoveries					
5120	Debt Service – Refunded Bonds					20,726,915
5150	Bond Discounts					
5200	Interfund Transfers – Out					
5300	Transfers Out to Component Units/Primary Governments					
Total Other Financing Sources (Uses)						\$344,930

Amounts Expressed in Whole Dollars		<u>General Fund</u> <u>(10)</u>	<u>Public Purpose Trust</u> <u>(27)</u>	<u>Other Compt Approved</u> <u>(28)</u>	<u>Athletic / Activity</u> <u>(29)</u>	<u>Capital Reserve</u> <u>(690.</u> <u>1850)</u> <u>(31)</u>
Special And Extraordinary Items						
9920	Special Items – Gains					
9930	Extraordinary Items – Gains					
5520	Special Items – Losses					
5530	Extraordinary Items – Losses					
Net Change In Fund Balances		(\$117,646)				
Fund Balance						
0001	Fund Balance - Beginning of Fiscal Year	2,155,972				
Fund Balance - End Of Year		\$2,038,326				

Amounts Expressed in Whole Dollars		<u>Capital Reserve (1431)</u> <u>(32)</u>	<u>Other Capital Projects</u> <u>Fund</u> <u>(39)</u>	<u>Debt Service</u> <u>(40)</u>	<u>Permanent</u> <u>(90)</u>	<u>Total Governmental</u> <u>Funds</u>
Special And Extraordinary Items						
9920	Special Items – Gains					
9930	Extraordinary Items – Gains					
5520	Special Items – Losses					
5530	Extraordinary Items – Losses					
Net Change In Fund Balances			(\$42,180)			(\$159,826)
Fund Balance						
0001	Fund Balance - Beginning of Fiscal Year		1,377,180			3,533,152
Fund Balance - End Of Year			\$1,335,000			\$3,373,326

LEA : 121136603 Panther Valley SD

Printed 11/3/2017 12:08:51 PM

Amounts Expressed in Whole Dollars	<u>Food Service</u> (51)	<u>Child Care</u> <u>Operations</u> (52)	<u>Other Enterprise</u> (58)	<u>TOTAL</u>	<u>Internal Service</u> (60)
Assets And Deferred Outflows Of Resources					
Current Assets					
0100 Cash and Cash Equivalents	421,724			421,724	
0110 Investments					
0130 Due From Other Funds					
0141 Due From Other Governments	35,349			35,349	
0142 State Revenue Receivable					
0143 Federal Revenue Receivable					
0146 Due from Primary Government					
0147 Due from Component Unit					
0150 Other Receivables					
0170 Inventories	17,991			17,991	
0180 Prepaid Expenses (Expenditures)	55,913			55,913	
0190 Other Current Assets					
Total Current Assets	\$530,977			\$530,977	
Noncurrent Assets					
0211 Land					
0212 Site Improvements (Net)					
0220 Buildings and Building Improvements (Net)					
0230 Machinery, Equipment and Furniture (Net)	122,308			122,308	
0250 Construction in Progress					
0260 Long Term Prepayments					
0290 Other Noncurrent Assets					
Total Noncurrent Assets	\$122,308			\$122,308	
0910 Deferred Outflows of Resources					
Total Assets And Deferred Outflows Of Resources	\$653,285			\$653,285	

Amounts Expressed in Whole Dollars	<u>Food Service</u> <u>(51)</u>	<u>Child Care</u> <u>Operations</u> <u>(52)</u>	<u>Other Enterprise</u> <u>(58)</u>	<u>TOTAL</u>	<u>Internal Service</u> <u>(60)</u>
Liabilities And Deferred Inflows Of Resources And Net Position					
Current Liabilities					
0400 Due to Other Funds					
0411 Due to Other Governments					
0413 Due to Component Unit					
0420 Accounts Payable	57,990			57,990	
0430 Contracts Payable					
0440 Current Portion of Long-Term Debt					
0450 Short-Term Payables					
0461 Accrued Salaries and Benefits	2,278			2,278	
0462 Payroll Deductions and Withholding					
0480 Unearned Revenues					
0490 Other Current Liabilities					
Total Current Liabilities	\$60,268			\$60,268	
Noncurrent Liabilities					
0510 Bonds Payable					
0520 Extended-Term Financing Agreements Payable					
0530 Lease-Purchase Obligations					
0540 Accumulated Compensated Absences					
0550 Authority Lease Obligations					
0560 Other Post-Employment Benefits (OPEB)					
0570 Net Pension Liability					
0599 Other Noncurrent Liabilities					
Total Noncurrent Liabilities					
Total Liabilities	\$60,268			\$60,268	
0950 Deferred Inflows of Resources	10,858			10,858	
Net Position					
0791 Net Investment in Capital Assets	122,308			122,308	
0008 Restricted Net Position (0792 – 0798)					
0799 Unrestricted Net Position	459,851			459,851	
Total Net Position	\$582,159			\$582,159	
Total Liabilities And Deferred Inflows Of Resources And Net Position	\$653,285			\$653,285	

Amounts Expressed in Whole Dollars	Food Service (51)	Child Care Operations (52)	Other Enterprise (58)	TOTAL	Internal Service (60)
Operating Revenues					
6600 Food Service Revenue	75,509			75,509	
0071 Charges for Services					
0072 Other Operating Revenue					
Total Operating Revenues	\$75,509			\$75,509	
Operating Expenses					
100 Personnel Services – Salaries	282,687			282,687	
200 Personnel Services – Employee Benefits	141,628			141,628	
300 Purchased Professional and Technical Services					
400 Purchased Property Services					
500 Other Purchased Services	64,980			64,980	
600 Supplies	517,158			517,158	
740 Depreciation	12,724			12,724	
810 Dues and Fees	9,395			9,395	
890 Miscellaneous Expenditures					
Total Operating Expenses	\$1,028,572			\$1,028,572	
Operating Income (Loss)	(\$953,063)			(\$953,063)	
Non Operating Revenues (Expenses)					
6500 Earnings on Investments	1,046			1,046	
6920 Contributions and Donations from Private Sources					
6930 Gains or Losses on Sale of Fixed Assets					
6991 Refunds of a Prior Year Expenditure					
7000 Revenue from State Sources	98,883			98,883	
8000 Revenue from Federal Sources	1,034,584			1,034,584	
820 Claims and Judgments Against the LEA					
830 Interest					
TOTAL Non Operating Revenues (Expenses)	\$1,134,513			\$1,134,513	
Income (Loss) Before Contributions And Transfers	\$181,450			\$181,450	

Amounts Expressed in Whole Dollars	<u>Food Service</u> <u>(51)</u>	<u>Child Care Operations</u> <u>(52)</u>	<u>Other Enterprise</u> <u>(58)</u>	<u>TOTAL</u>	<u>Internal Service</u> <u>(60)</u>
Contributions, Transfers, and Special and Extraordinary Items					
5200 Interfund Transfers – Out					
5300 Transfers Out to Component Units/Primary Governments					
5520 Special Items – Losses					
5530 Extraordinary Items – Losses					
9300 Interfund Transfers - IN					
9500 Capital Contributions					
9700 Transfers IN From Component Units/Primary Governments					
9920 Special Items – Gains					
9930 Extraordinary Items – Gains					
Change In Net Position	\$181,450			\$181,450	
0002 Net Position - Beginning of Fiscal Year	400,709			400,709	
0003 Accounting Changes / Residual Equity Transfers					
Net Position - End Of Year	\$582,159			\$582,159	

LEA : 121136603 Panther Valley SD

Printed 11/3/2017 12:08:54 PM

Amounts Expressed in Whole Dollars	<u>Food Service</u> <u>(51)</u>	<u>Child Care Operations</u> <u>(52)</u>	<u>Other Enterprise</u> <u>(58)</u>	<u>TOTAL</u>	<u>Internal Service(60)</u>
Cash Flows From Operating Activities					
0011 Cash Receipts From Users	145,563			145,563	
0012 Cash Receipts From Assessments Made to Other Funds					
0013 Cash Receipts From Earnings on Investments					
0014 Cash Receipts From Other Operating Revenue					
0015 Cash Payments To Employees For Services	374,102			374,102	
0016 Cash Payments For Insurance Claims					
0017 Cash Payments To Suppliers For Goods and Services	475,920			475,920	
0018 Cash Payments For Other Operating Expenses					
Net Cash Provided By (Used For) Operating Activities	(\$704,459)			(\$704,459)	
Cash Flows From Non-Capital Financing Activities					
0021 Receipts From Local Sources - 6000					
0022 Receipts From State Sources - 7000	98,883			98,883	
0023 Receipts From Federal Sources -8000	1,038,639			1,038,639	
0024 Notes and Loans Received (Repaid)					
0025 Interest Paid on Notes/Loans - 5100-830					
0026 Operating Transfers In (Out)/Residual Equity Trans					
0027 Operating Transfers In (Out) Primary Government / Comp Unit					
0028 Receipts From Refund of Prior Year Expenditures - 6991					
0029 Special and Extraordinary Gains (losses)					
Net Cash Prov By (Used for) Non-Capital Financing Activities	\$1,137,522			\$1,137,522	
Cash Flows From Capital and Related Financing Activities					
0031 Payments For Fac Acq, Const, and Imp - 4000	(68,674)			(68,674)	
0032 Gain / (Loss) on Sale of Fixed Assets - 6930					
0033 Proceeds From Extended Term Financing - 9200					
0034 Principal Paid on Financing Agreements					
0035 Interest Paid on Financing Agreements - 5100-830					
0036 (Inc) Dec in Contributed Capital					
Net Cash Prov By (Used for) Capital and Related Financing Activities	(\$68,674)			(\$68,674)	
Cash Flows From Investing Activities					
0041 Earnings on Investments - 6500	1,046			1,046	
0042 Purchase of Inv Securities / Deposits to Inv Pools					
0043 Receipts From Investment Pool Withdrawals					
0044 Proceeds from Sale and Maturity of Inv Securities					
0045 Loans Received (Paid)					
Net Cash Prov By (Used for) Investing Activities	\$1,046			\$1,046	

LEA : 121136603 Panther Valley SD

Printed 11/3/2017 12:08:54 PM

	Food Service (51)	Child Care Operations (52)	Other Enterprise (58)	TOTAL	Internal Service (60)
Net Increase (Decrease) in Cash Flows	365,435			365,435	
0004 Cash and Cash Equivalents Beginning of Year	56,289			56,289	
Cash and Cash Equivalents at Year End	\$421,724			\$421,724	
Reconciliation of Operating Income (Loss) To Net Cash Provided by (Used For) Operating Activities					
0005 Operating Income (Loss) per REP	(953,063)			(953,063)	
Adjustments					
0051 Depreciation and Net Amortization	12,724			12,724	
0052 Provision for Uncollectible Accounts					
0053 Other Adjustments					
Effect of Changes in Assets, Liabilities, Deferred Outflows and Deferred Inflows					
0054 (Inc) Dec In Accounts Receivable (0120-0150)	197,453			197,453	
0055 Advances to Other Funds (0160)					
0056 (Inc) Dec in Inventories (0170)	(7,164)			(7,164)	
0057 (Inc) Dec in Prepaid Expenses (0180)	(4,224)			(4,224)	
0058 (Inc) Dec in Other Current or Noncurrent Assets					
0064 Deferred Outflows (0910)					
0059 Inc (Dec) in Accounts Payable (0400-0450)	48,402			48,402	
0060 Inc (Dec) in Accrued Salaries/Benefits (0461)	(748)			(748)	
0065 Inc (Dec) in Net Pension Liabilities (0570)					
0066 Inc (Dec) in Other Postemp Benefit Oblig (0560)					
0061 Inc (Dec) in Payroll Deductions/Withholding (0462)					
0062 Inc (Dec) in Unearned Revenue (0480)					
0063 Inc (Dec) in Other Current or Noncurrent Liabilities					
0067 Deferred Inflows (0950)	2,161			2,161	
Total Adjustments	\$248,604			\$248,604	
Cash Provided By (Used for) Total	(\$704,459)			(\$704,459)	

COMBINED STATEMENT OF CASH FLOWS
SCHEDULE OF NONCASH INVESTING, CAPITAL, AND FINANCING ACTIVITIES

Explanation of Transaction and Balance Sheet Effect	Amount
Total	

LEA : 121136603 Panther Valley SD

Printed 11/3/2017 12:08:55 PM

Amounts Expressed in Whole Dollars	<u>Private Purpose Trust</u> <u>(71)</u>	<u>Investment Trust</u> <u>(72)</u>	<u>Pension Trust</u> <u>(73)</u>	<u>Activity</u> <u>(81)</u>
Assets And Deferred Outflows Of Resources				
Assets				
0100 Cash and Cash Equivalents	152,663			52,317
0110 Investments				
0130 Due From Other Funds				
0147 Due from Component Unit				
0150 Other Receivables				
0170 Inventories				
0180 Prepaid Expenses (Expenditures)				
0190 Other Current Assets				
0220 Buildings and Building Improvements (Net)				
0230 Machinery, Equipment and Furniture (Net)				
Total Assets	\$152,663			\$52,317
0910 Deferred Outflows of Resources				
Total Assets And Deferred Outflows Of Resources	\$152,663			\$52,317

LEA : 121136603 Panther Valley SD

Printed 11/3/2017 12:08:55 PM

Amounts Expressed in Whole Dollars		<u>Other Agency</u> <u>(89)</u>	<u>Discrete Component Units</u> <u>(98)</u>	<u>Discrete Component Units</u> <u>(99)</u>	<u>Total Fiduciary Funds</u>
Assets And Deferred Outflows Of Resources					
Assets					
0100	Cash and Cash Equivalents				204,980
0110	Investments				
0130	Due From Other Funds				
0147	Due from Component Unit				
0150	Other Receivables				
0170	Inventories				
0180	Prepaid Expenses (Expenditures)				
0190	Other Current Assets				
0220	Buildings and Building Improvements (Net)				
0230	Machinery, Equipment and Furniture (Net)				
Total Assets					\$204,980
0910	Deferred Outflows of Resources				
Total Assets And Deferred Outflows Of Resources					\$204,980

LEA : 121136603 Panther Valley SD

Printed 11/3/2017 12:08:55 PM

Amounts Expressed in Whole Dollars	<u>Private Purpose Trust</u> (71)	<u>Investment Trust</u> (72)	<u>Pension Trust</u> (73)	<u>Activity</u> (81)
Liabilities, Deferred Inflows Of Resources And Net Position				
Liabilities				
0400 Due to Other Funds	214			
0411 Due to Other Governments				
0412 Due to Primary Government				
0413 Due to Component Unit				
0420 Accounts Payable				52,317
0430 Contracts Payable				
0450 Short-Term Payables				
0461 Accrued Salaries and Benefits				
0462 Payroll Deductions and Withholding				
0480 Unearned Revenues				
0490 Other Current Liabilities				
Total Liabilities	\$214			\$52,317
0950 Deferred Inflows of Resources				
Net Position				
0791 Net Investment in Capital Assets				
0009 Restricted Net Position (0792 – 0798)	152,449			
0799 Unrestricted Net Position				
Total Net Position	\$152,449			
Total Liabilities, Deferred Inflows Of Resources And Net Position	\$152,663			\$52,317

LEA : 121136603 Panther Valley SD

Printed 11/3/2017 12:08:55 PM

Amounts Expressed in Whole Dollars

<u>Other Agency</u> <u>(89)</u>	<u>Discrete Component Units</u> <u>(98)</u>	<u>Discrete Component Units</u> <u>(99)</u>	<u>Total Fiduciary Funds</u>
------------------------------------	--	--	------------------------------

Liabilities, Deferred Inflows Of Resources And Net Position

Liabilities

0400 Due to Other Funds			214
0411 Due to Other Governments			
0412 Due to Primary Government			
0413 Due to Component Unit			
0420 Accounts Payable			52,317
0430 Contracts Payable			
0450 Short-Term Payables			
0461 Accrued Salaries and Benefits			
0462 Payroll Deductions and Withholding			
0480 Unearned Revenues			
0490 Other Current Liabilities			

Total Liabilities			\$52,531
--------------------------	--	--	-----------------

0950 Deferred Inflows of Resources

Net Position

0791 Net Investment in Capital Assets			
0009 Restricted Net Position (0792 – 0798)			152,449
0799 Unrestricted Net Position			

Total Net Position			\$152,449
---------------------------	--	--	------------------

Total Liabilities, Deferred Inflows Of Resources And Net Position			\$204,980
--	--	--	------------------

LEA : 121136603 Panther Valley SD

Printed 11/3/2017 12:08:56 PM

Amounts Expressed in Whole Dollars	<u>Private Purpose Trust</u> <u>(71)</u>	<u>Investment Trust</u> <u>(72)</u>	<u>Pension Trust</u> <u>(73)</u>	<u>Discrete Component</u> <u>Units</u> <u>(98)</u>	<u>Discrete Component</u> <u>Units</u> <u>(99)</u>	<u>Total Fiduciary</u> <u>Funds</u>
Additions						
0091 Gifts and Contributions	20					20
0092 Other Additions	174					174
Deductions						
0093 Scholarships Awarded	9,900					9,900
0094 Other Deductions						
Change In Net Position	(\$9,706)					(\$9,706)
0006 Net Position – Beginning of Fiscal Year	162,155					162,155
0007 Net Position Held in Trust for Pension Benefits						
Net Position - End of Fiscal Year	\$152,449					\$152,449

LEA : 121136603 Panther Valley SD

General Fund (10)

Printed 11/3/2017 12:08:56 PM

Page - 1 of 4

	Revenue Reported In Current Year	Current Year Tax Accrual	Prior Year Tax Accrual	Taxes Collected In Current Year
Revenue from Local Sources				
6111 Current Real Estate Taxes	7,819,317.66			7,819,317.66
6113 Public Utility Realty Taxes	11,026.41			11,026.41
6114 Payments in Lieu of Current Taxes - State / Local	19,734.94			19,734.94
6120 Current Per Capita Taxes, Section 679	24,226.60			24,226.60
6141 Current Act 511 Per Capita Taxes	24,226.60			24,226.60
6143 Current Act 511 Local Services Taxes	14,472.35			14,472.35
6151 Current Act 511 Earned Income Taxes	945,567.93			945,567.93
6152 Current Act 511 Occupation Taxes	367,707.50			367,707.50
6153 Current Act 511 Real Estate Transfer Taxes	53,571.97			53,571.97
6411 Delinquent Real Estate Taxes	653,415.63			653,415.63
6420 Delinquent Per Capita Taxes, Section 679	3,513.40			3,513.40
6440 Delinquent Local Enabling Taxes - Flat Rate Assessments	3,111.90			3,111.90
6451 Delinquent Act 511 Earned Income Taxes	19,037.35			19,037.35
6452 Delinquent Act 511 Occupation Taxes	68,478.75			68,478.75
6500 Earnings on Investments	35,671.02			
6700 Revenues from LEA Activities	41,420.66			
6829 State Revenue Received from Other Sources	29,000.00			
6832 Federal IDEA Revenue Received as Pass Through	373,302.33			
6839 Federal Revenue Received from Other Sources	57,610.45			
6961 Transportation Services Provided Other Pennsylvania LEAs	17,826.16			
6991 Refunds of a Prior Year Expenditure	131,350.00			
6992 Energy Efficiency Revenues and Incentives	20,007.00			
6999 Other Revenues Not Specified Above	132,795.63			
TOTAL Revenue from Local Sources	\$10,866,392.24			\$10,027,408.99

	Revenue Reported In Current Year			
<u>Revenue from State Sources</u>				
7110 Basic Education Funding	8,396,501.80			
7160 Tuition for Orphans Subsidy	123,530.99			
7271 Special Education funds for School-Aged Pupils	1,048,512.04			
7311 Pupil Transportation Subsidy	708,685.60			
7312 Nonpublic and Charter School Pupil Transportation Subsidy	49,280.00			
7320 Rental and Sinking Fund Payments / Building Reimbursement Subsidy	352,036.13			
7340 State Property Tax Reduction Allocation	739,809.24			
7505 Ready to Learn Block Grant	338,016.00			
7810 State Share of Social Security and Medicare Taxes	433,738.70			
7820 State Share of Retirement Contributions	1,591,928.43			
TOTAL Revenue from State Sources	\$13,782,038.93			

	Revenue Reported In Current Year			
<u>Revenue from Federal Sources</u>				
8514 NCLB, Title I - Improving the Academic Achievement of the Disadvantaged	798,478.00			
8515 NCLB, Title II - Preparing, Training and Recruiting High Quality Teachers and Principals	90,514.00			
8519 NCLB, Title VI - Flexibility and Accountability	36,146.00			
8731 ARRA - Build America Bonds	101,770.66			
8810 School-Based Access Medicaid Reimbursement Program (SBAP) Reimbursements (Access)	1,445.60			
8820 Medical Assistance Reimbursement for Administrative Claiming (Quarterly) Program	52,912.00			
TOTAL Revenue from Federal Sources	\$1,081,266.26			

		Revenue Reported In Current Year		
<u>Other Financing Sources</u>				
9120	Proceeds from Refunding of Bonds	21,071,845.25		
TOTAL Other Financing Sources		\$21,071,845.25		
TOTAL FROM ALL SOURCES		\$46,801,542.68		\$10,027,408.99

Revenue from Local Sources	10,866,392.24
Revenue from State Sources	13,782,038.93
Revenue from Federal Sources	1,081,266.26
Other Financing Sources	21,071,845.25
TOTAL FROM ALL SOURCES	\$46,801,542.68

LEA : 121136603 Panther Valley SD

Printed 11/3/2017 12:08:59 PM

General Fund (10)	
1000 Instruction	<u>Total</u>
100 <u>Personnel Services – Salaries</u>	
100 Personnel Services – Salaries	6,645,535.42
Total Personnel Services – Salaries	\$6,645,535.42
200 <u>Personnel Services – Employee Benefits</u>	
210 Group Insurance – Contracted Provider	1,618,776.01
220 Social Security Contributions	493,935.04
230 PSERS Retirement Contributions	1,950,390.98
260 Workers’ Compensation	49,052.00
Total Personnel Services – Employee Benefits	\$4,112,154.03
300 <u>Purchased Professional and Technical Services</u>	
322 Professional Educational Services – Ius	1,023,971.00
329 Professional Educational Services – Other	525,372.37
340 Technical Services	4,544.75
Total Purchased Professional and Technical Services	\$1,553,888.12
400 <u>Purchased Property Services</u>	
430 Repairs and Maintenance Services	1,363.00
Total Purchased Property Services	\$1,363.00
500 <u>Other Purchased Services</u>	
510 Student Transportation Services	19,092.65
561 Tuition To Other School Districts Within the State	373,224.91
562 Tuition To Pennsylvania Charter Schools	1,449,091.76
564 Tuition To Career and Technology Centers	906,080.00
566 Tuition To Institutions of Higher Education and Technical Institutes	134,833.00
568 Tuition To Private Residential Rehabilitative Institutions (PRRI) [In-State] and Detention Centers	1,161,743.78
580 Travel	5,270.66
Total Other Purchased Services	\$4,049,336.76
600 <u>Supplies</u>	
610 General Supplies	155,770.62
630 Food	3,303.56
640 Books and Periodicals	152,387.10
Total Supplies	\$311,461.28
700 <u>Property</u>	
752 Capital Equipment – Original and Additional	92,629.50
762 Capitalized Equipment - Replacement	35,041.55
Total Property	\$127,671.05
800 <u>Other Objects</u>	
810 Dues and Fees	52,032.97
890 Miscellaneous Expenditures	151,249.00
Total Other Objects	\$203,281.97
Total 1000 Instruction	\$17,004,691.63

LEA : 121136603 Panther Valley SD

Printed 11/3/2017 12:08:59 PM

General Fund (10)				
1100 Regular Programs – Elementary / Secondary	<u>Elementary</u>	<u>Secondary</u>	<u>Federal</u>	<u>Total</u>
100 <u>Personnel Services – Salaries</u>				
100 Personnel Services – Salaries	2,834,078.80	1,165,570.81		3,999,649.61
Total Personnel Services – Salaries	\$2,834,078.80	\$1,165,570.81		\$3,999,649.61
200 <u>Personnel Services – Employee Benefits</u>				
210 Group Insurance – Contracted Provider	788,496.50	311,456.04		1,099,952.54
220 Social Security Contributions	212,893.23	84,131.17		297,024.40
230 PSERS Retirement Contributions	844,940.53	327,297.23		1,172,237.76
260 Workers' Compensation	26,978.60	12,263.00		39,241.60
Total Personnel Services – Employee Benefits	\$1,873,308.86	\$735,147.44		\$2,608,456.30
300 <u>Purchased Professional and Technical Services</u>				
340 Technical Services	2,272.38	2,272.37		4,544.75
Total Purchased Professional and Technical Services	\$2,272.38	\$2,272.37		\$4,544.75
400 <u>Purchased Property Services</u>				
430 Repairs and Maintenance Services		1,363.00		1,363.00
Total Purchased Property Services		\$1,363.00		\$1,363.00
500 <u>Other Purchased Services</u>				
510 Student Transportation Services	1,610.66	6,602.76		8,213.42
561 Tuition To Other School Districts Within the State	186,612.46	186,612.45		373,224.91
562 Tuition To Pennsylvania Charter Schools	376,796.01	376,796.01		753,592.02
568 Tuition To Private Residential Rehabilitative Institutions (PRRI) [In-State] and Detention Centers	2,977.47	2,977.47		5,954.94
580 Travel	1,571.52	1,368.95		2,940.47
Total Other Purchased Services	\$569,568.12	\$574,357.64		\$1,143,925.76
600 <u>Supplies</u>				
610 General Supplies	35,918.48	47,340.50		83,258.98
630 Food	1,125.00	975.00		2,100.00
640 Books and Periodicals	105,327.20	13,221.07	25,036.87	143,585.14
Total Supplies	\$142,370.68	\$61,536.57	\$25,036.87	\$228,944.12
700 <u>Property</u>				
752 Capital Equipment – Original and Additional	2,058.92	18,400.00	45,523.18	65,982.10
762 Capitalized Equipment - Replacement			35,041.55	35,041.55
Total Property	\$2,058.92	\$18,400.00	\$80,564.73	\$101,023.65
800 <u>Other Objects</u>				
810 Dues and Fees	13,265.11	17,692.41	3,244.50	34,202.02
Total Other Objects	\$13,265.11	\$17,692.41	\$3,244.50	\$34,202.02
Total 1100 Regular Programs – Elementary / Secondary	\$5,436,922.87	\$2,576,340.24	\$108,846.10	\$8,122,109.21

LEA : 121136603 Panther Valley SD

Printed 11/3/2017 12:08:59 PM

General Fund (10)				
1110 Regular Programs	<u>Elementary</u>	<u>Secondary</u>	<u>Federal</u>	<u>Total</u>
100 <u>Personnel Services – Salaries</u>				
100 Personnel Services – Salaries	2,834,078.80	1,165,570.81		3,999,649.61
Total Personnel Services – Salaries	\$2,834,078.80	\$1,165,570.81		\$3,999,649.61
200 <u>Personnel Services – Employee Benefits</u>				
210 Group Insurance – Contracted Provider	788,496.50	311,456.04		1,099,952.54
220 Social Security Contributions	212,893.23	84,131.17		297,024.40
230 PSERS Retirement Contributions	844,940.53	327,297.23		1,172,237.76
260 Workers' Compensation	26,978.60	12,263.00		39,241.60
Total Personnel Services – Employee Benefits	\$1,873,308.86	\$735,147.44		\$2,608,456.30
300 <u>Purchased Professional and Technical Services</u>				
340 Technical Services	2,272.38	2,272.37		4,544.75
Total Purchased Professional and Technical Services	\$2,272.38	\$2,272.37		\$4,544.75
400 <u>Purchased Property Services</u>				
430 Repairs and Maintenance Services		1,363.00		1,363.00
Total Purchased Property Services		\$1,363.00		\$1,363.00
500 <u>Other Purchased Services</u>				
510 Student Transportation Services	1,610.66	6,602.76		8,213.42
561 Tuition To Other School Districts Within the State	186,612.46	186,612.45		373,224.91
562 Tuition To Pennsylvania Charter Schools	376,796.01	376,796.01		753,592.02
568 Tuition To Private Residential Rehabilitative Institutions (PRRI) [In-State] and Detention Centers	2,977.47	2,977.47		5,954.94
580 Travel	1,571.52	1,368.95		2,940.47
Total Other Purchased Services	\$569,568.12	\$574,357.64		\$1,143,925.76
600 <u>Supplies</u>				
610 General Supplies	35,918.48	47,340.50		83,258.98
630 Food	1,125.00	975.00		2,100.00
640 Books and Periodicals	105,327.20	13,221.07	25,036.87	143,585.14
Total Supplies	\$142,370.68	\$61,536.57	\$25,036.87	\$228,944.12
700 <u>Property</u>				
752 Capital Equipment – Original and Additional	2,058.92	18,400.00	45,523.18	65,982.10
762 Capitalized Equipment - Replacement			35,041.55	35,041.55
Total Property	\$2,058.92	\$18,400.00	\$80,564.73	\$101,023.65
800 <u>Other Objects</u>				
810 Dues and Fees	13,265.11	17,692.41	3,244.50	34,202.02
Total Other Objects	\$13,265.11	\$17,692.41	\$3,244.50	\$34,202.02
Total 1110 Regular Programs	\$5,436,922.87	\$2,576,340.24	\$108,846.10	\$8,122,109.21

LEA : 121136603 Panther Valley SD

Printed 11/3/2017 12:08:59 PM

General Fund (10)				
1200 Special Programs – Elementary / Secondary	<u>Elementary</u>	<u>Secondary</u>	<u>Federal</u>	<u>Total</u>
100 <u>Personnel Services – Salaries</u>				
100 Personnel Services – Salaries	632,828.40	624,977.80	338,701.00	1,596,507.20
Total Personnel Services – Salaries	\$632,828.40	\$624,977.80	\$338,701.00	\$1,596,507.20
200 <u>Personnel Services – Employee Benefits</u>				
210 Group Insurance – Contracted Provider	87,650.74	87,650.71	81,778.09	257,079.54
220 Social Security Contributions	46,891.70	46,291.12	25,163.56	118,346.38
230 PSERS Retirement Contributions	183,864.58	181,507.04	101,711.80	467,083.42
260 Workers' Compensation	4,905.20	4,905.20		9,810.40
Total Personnel Services – Employee Benefits	\$323,312.22	\$320,354.07	\$208,653.45	\$852,319.74
300 <u>Purchased Professional and Technical Services</u>				
322 Professional Educational Services – Ius	511,985.50	511,985.50		1,023,971.00
329 Professional Educational Services – Other	242,426.52	242,426.50		484,853.02
Total Purchased Professional and Technical Services	\$754,412.02	\$754,412.00		\$1,508,824.02
500 <u>Other Purchased Services</u>				
510 Student Transportation Services	2,876.18	2,876.18		5,752.36
562 Tuition To Pennsylvania Charter Schools	347,749.87	347,749.87		695,499.74
568 Tuition To Private Residential Rehabilitative Institutions (PRRI) [In-State] and Detention Centers	577,894.42	577,894.42		1,155,788.84
580 Travel	1,165.10	1,165.09		2,330.19
Total Other Purchased Services	\$929,685.57	\$929,685.56		\$1,859,371.13
600 <u>Supplies</u>				
610 General Supplies	20,302.01	20,302.01	1,332.90	41,936.92
Total Supplies	\$20,302.01	\$20,302.01	\$1,332.90	\$41,936.92
700 <u>Property</u>				
752 Capital Equipment – Original and Additional	665.40			665.40
Total Property	\$665.40			\$665.40
800 <u>Other Objects</u>				
810 Dues and Fees	1,915.47	1,915.47		3,830.94
890 Miscellaneous Expenditures	75,624.50	75,624.50		151,249.00
Total Other Objects	\$77,539.97	\$77,539.97		\$155,079.94
Total 1200 Special Programs – Elementary / Secondary	\$2,738,745.59	\$2,727,271.41	\$548,687.35	\$6,014,704.35

LEA : 121136603 Panther Valley SD

Printed 11/3/2017 12:08:59 PM

General Fund (10)

1210 Life Skills Support

	Elementary	Secondary	Federal	Total
100 <u>Personnel Services – Salaries</u>				
100 Personnel Services – Salaries	615,777.08	615,777.05	338,701.00	1,570,255.13
Total Personnel Services – Salaries	\$615,777.08	\$615,777.05	\$338,701.00	\$1,570,255.13
200 <u>Personnel Services – Employee Benefits</u>				
210 Group Insurance – Contracted Provider	87,650.74	87,650.71	81,778.09	257,079.54
220 Social Security Contributions	46,291.12	46,291.12	25,163.56	117,745.80
230 PSERS Retirement Contributions	181,507.04	181,507.04	101,711.80	464,725.88
260 Workers' Compensation	4,905.20	4,905.20		9,810.40
Total Personnel Services – Employee Benefits	\$320,354.10	\$320,354.07	\$208,653.45	\$849,361.62
300 <u>Purchased Professional and Technical Services</u>				
322 Professional Educational Services – Ius	511,985.50	511,985.50		1,023,971.00
329 Professional Educational Services – Other	182,124.39	182,124.38		364,248.77
Total Purchased Professional and Technical Services	\$694,109.89	\$694,109.88		\$1,388,219.77
500 <u>Other Purchased Services</u>				
510 Student Transportation Services	2,876.18	2,876.18		5,752.36
568 Tuition To Private Residential Rehabilitative Institutions (PRRI) [In-State] and Detention Centers	577,894.42	577,894.42		1,155,788.84
580 Travel	1,165.10	1,165.09		2,330.19
Total Other Purchased Services	\$581,935.70	\$581,935.69		\$1,163,871.39
600 <u>Supplies</u>				
610 General Supplies	20,302.01	20,302.01	1,332.90	41,936.92
Total Supplies	\$20,302.01	\$20,302.01	\$1,332.90	\$41,936.92
700 <u>Property</u>				
752 Capital Equipment – Original and Additional	665.40			665.40
Total Property	\$665.40			\$665.40
800 <u>Other Objects</u>				
810 Dues and Fees	1,915.47	1,915.47		3,830.94
890 Miscellaneous Expenditures	75,624.50	75,624.50		151,249.00
Total Other Objects	\$77,539.97	\$77,539.97		\$155,079.94
Total 1210 Life Skills Support	\$2,310,684.15	\$2,310,018.67	\$548,687.35	\$5,169,390.17

LEA : 121136603 Panther Valley SD

Printed 11/3/2017 12:08:59 PM

General Fund (10)

1220 Sensory Support

	<u>Elementary</u>	<u>Secondary</u>	<u>Federal</u>	<u>Total</u>
300 <u>Purchased Professional and Technical Services</u>				
329 Professional Educational Services – Other	60,302.13	60,302.12		120,604.25
Total Purchased Professional and Technical Services	\$60,302.13	\$60,302.12		\$120,604.25
Total 1220 Sensory Support	\$60,302.13	\$60,302.12		\$120,604.25

LEA : 121136603 Panther Valley SD

Printed 11/3/2017 12:08:59 PM

General Fund (10)

1240 Academic Support

	<u>Elementary</u>	<u>Secondary</u>	<u>Federal</u>	<u>Total</u>
100 <u>Personnel Services – Salaries</u>				
100 Personnel Services – Salaries	9,200.75	9,200.75		18,401.50
Total Personnel Services – Salaries	\$9,200.75	\$9,200.75		\$18,401.50
Total 1240 Academic Support	\$9,200.75	\$9,200.75		\$18,401.50

LEA : 121136603 Panther Valley SD

Printed 11/3/2017 12:08:59 PM

General Fund (10)

1243 Gifted Support

	<u>Elementary</u>	<u>Secondary</u>	<u>Federal</u>	<u>Total</u>
100 <u>Personnel Services – Salaries</u>				
100 Personnel Services – Salaries	9,200.75	9,200.75		18,401.50
Total Personnel Services – Salaries	\$9,200.75	\$9,200.75		\$18,401.50
Total 1243 Gifted Support	\$9,200.75	\$9,200.75		\$18,401.50

LEA : 121136603 Panther Valley SD

Printed 11/3/2017 12:08:59 PM

General Fund (10)

1270 Multi-Handicapped Support	<u>Elementary</u>	<u>Secondary</u>	<u>Federal</u>	<u>Total</u>
100 <u>Personnel Services – Salaries</u>				
100 Personnel Services – Salaries	7,850.57			7,850.57
Total Personnel Services – Salaries	\$7,850.57			\$7,850.57
200 <u>Personnel Services – Employee Benefits</u>				
220 Social Security Contributions	600.58			600.58
230 PSERS Retirement Contributions	2,357.54			2,357.54
Total Personnel Services – Employee Benefits	\$2,958.12			\$2,958.12
Total 1270 Multi-Handicapped Support	\$10,808.69			\$10,808.69

LEA : 121136603 Panther Valley SD

Printed 11/3/2017 12:08:59 PM

General Fund (10)

1290 Special Programs - Other Support	<u>Elementary</u>	<u>Secondary</u>	<u>Federal</u>	<u>Total</u>
500 <u>Other Purchased Services</u>				
562 Tuition To Pennsylvania Charter Schools	347,749.87	347,749.87		695,499.74
Total Other Purchased Services	\$347,749.87	\$347,749.87		\$695,499.74
Total 1290 Special Programs - Other Support	\$347,749.87	\$347,749.87		\$695,499.74

LEA : 121136603 Panther Valley SD

Printed 11/3/2017 12:08:59 PM

General Fund (10)				
1300 Vocational Education	<u>Elementary</u>	<u>Secondary</u>	<u>Federal</u>	<u>Total</u>
100 <u>Personnel Services – Salaries</u>				
100 Personnel Services – Salaries		240,607.77		240,607.77
Total Personnel Services – Salaries		\$240,607.77		\$240,607.77
200 <u>Personnel Services – Employee Benefits</u>				
210 Group Insurance – Contracted Provider		78,066.30		78,066.30
220 Social Security Contributions		18,009.05		18,009.05
230 PSERS Retirement Contributions		70,426.30		70,426.30
Total Personnel Services – Employee Benefits		\$166,501.65		\$166,501.65
500 <u>Other Purchased Services</u>				
564 Tuition To Career and Technology Centers		906,080.00		906,080.00
Total Other Purchased Services		\$906,080.00		\$906,080.00
600 <u>Supplies</u>				
610 General Supplies		13,469.51		13,469.51
630 Food		1,203.56		1,203.56
640 Books and Periodicals		8,801.96		8,801.96
Total Supplies		\$23,475.03		\$23,475.03
700 <u>Property</u>				
752 Capital Equipment – Original and Additional		25,982.00		25,982.00
Total Property		\$25,982.00		\$25,982.00
Total 1300 Vocational Education		\$1,362,646.45		\$1,362,646.45

LEA : 121136603 Panther Valley SD

Printed 11/3/2017 12:08:59 PM

General Fund (10)				
1400 Other Instructional Programs – Elementary / Secondary	<u>Elementary</u>	<u>Secondary</u>	<u>Federal</u>	<u>Total</u>
100 <u>Personnel Services – Salaries</u>				
100 Personnel Services – Salaries	139,115.08	152,622.57	517,033.19	808,770.84
Total Personnel Services – Salaries	\$139,115.08	\$152,622.57	\$517,033.19	\$808,770.84
200 <u>Personnel Services – Employee Benefits</u>				
210 Group Insurance – Contracted Provider	13,279.76	13,279.76	157,118.11	183,677.63
220 Social Security Contributions	9,763.63	10,796.91	39,994.67	60,555.21
230 PSERS Retirement Contributions	38,020.16	42,076.43	160,546.91	240,643.50
Total Personnel Services – Employee Benefits	\$61,063.55	\$66,153.10	\$357,659.69	\$484,876.34
300 <u>Purchased Professional and Technical Services</u>				
329 Professional Educational Services – Other	20,259.68	20,259.67		40,519.35
Total Purchased Professional and Technical Services	\$20,259.68	\$20,259.67		\$40,519.35
500 <u>Other Purchased Services</u>				
510 Student Transportation Services	2,563.44	2,563.43		5,126.87
Total Other Purchased Services	\$2,563.44	\$2,563.43		\$5,126.87
600 <u>Supplies</u>				
610 General Supplies			17,105.21	17,105.21
Total Supplies			\$17,105.21	\$17,105.21
800 <u>Other Objects</u>				
810 Dues and Fees			14,000.01	14,000.01
Total Other Objects			\$14,000.01	\$14,000.01
Total 1400 Other Instructional Programs – Elementary / Secondary	\$223,001.75	\$241,598.77	\$905,798.10	\$1,370,398.62

LEA : 121136603 Panther Valley SD

Printed 11/3/2017 12:08:59 PM

General Fund (10)

1420 Summer School

	<u>Elementary</u>	<u>Secondary</u>	<u>Federal</u>	<u>Total</u>
100 <u>Personnel Services – Salaries</u>				
100 Personnel Services – Salaries		7,950.00		7,950.00
Total Personnel Services – Salaries		\$7,950.00		\$7,950.00
200 <u>Personnel Services – Employee Benefits</u>				
220 Social Security Contributions		608.18		608.18
230 PSERS Retirement Contributions		2,387.39		2,387.39
Total Personnel Services – Employee Benefits		\$2,995.57		\$2,995.57
Total 1420 Summer School		\$10,945.57		\$10,945.57

LEA : 121136603 Panther Valley SD

Printed 11/3/2017 12:08:59 PM

General Fund (10)

1430 Homebound Instruction	<u>Elementary</u>	<u>Secondary</u>	<u>Federal</u>	<u>Total</u>
100 <u>Personnel Services – Salaries</u>				
100 Personnel Services – Salaries	15,009.35	20,566.85		35,576.20
Total Personnel Services – Salaries	\$15,009.35	\$20,566.85		\$35,576.20
200 <u>Personnel Services – Employee Benefits</u>				
210 Group Insurance – Contracted Provider	7,345.57	7,345.57		14,691.14
220 Social Security Contributions	1,117.11	1,542.25		2,659.36
230 PSERS Retirement Contributions	4,507.34	6,176.24		10,683.58
Total Personnel Services – Employee Benefits	\$12,970.02	\$15,064.06		\$28,034.08
Total 1430 Homebound Instruction	\$27,979.37	\$35,630.91		\$63,610.28

LEA : 121136603 Panther Valley SD

Printed 11/3/2017 12:08:59 PM

General Fund (10)

1440 Alternative Regular Education Programs	<u>Elementary</u>	<u>Secondary</u>	<u>Federal</u>	<u>Total</u>
100 <u>Personnel Services – Salaries</u>				
100 Personnel Services – Salaries	2,718.75	2,718.75		5,437.50
Total Personnel Services – Salaries	\$2,718.75	\$2,718.75		\$5,437.50
200 <u>Personnel Services – Employee Benefits</u>				
220 Social Security Contributions	208.00	207.99		415.99
230 PSERS Retirement Contributions	816.45	816.44		1,632.89
Total Personnel Services – Employee Benefits	\$1,024.45	\$1,024.43		\$2,048.88
Total 1440 Alternative Regular Education Programs	\$3,743.20	\$3,743.18		\$7,486.38

LEA : 121136603 Panther Valley SD

Printed 11/3/2017 12:08:59 PM

General Fund (10)

1441 Adjudicated / Court-Placed Programs	<u>Elementary</u>	<u>Secondary</u>	<u>Federal</u>	<u>Total</u>
100 <u>Personnel Services – Salaries</u>				
100 Personnel Services – Salaries	2,718.75	2,718.75		5,437.50
Total Personnel Services – Salaries	\$2,718.75	\$2,718.75		\$5,437.50
200 <u>Personnel Services – Employee Benefits</u>				
220 Social Security Contributions	208.00	207.99		415.99
230 PSERS Retirement Contributions	816.45	816.44		1,632.89
Total Personnel Services – Employee Benefits	\$1,024.45	\$1,024.43		\$2,048.88
Total 1441 Adjudicated / Court-Placed Programs	\$3,743.20	\$3,743.18		\$7,486.38

LEA : 121136603 Panther Valley SD

Printed 11/3/2017 12:08:59 PM

General Fund (10)

1450 Instructional Programs Outside the Established School Day	<u>Elementary</u>	<u>Secondary</u>	<u>Federal</u>	<u>Total</u>
100 <u>Personnel Services – Salaries</u>				
100 Personnel Services – Salaries	150.00	150.00		300.00
Total Personnel Services – Salaries	\$150.00	\$150.00		\$300.00
200 <u>Personnel Services – Employee Benefits</u>				
220 Social Security Contributions	11.48	11.47		22.95
230 PSERS Retirement Contributions	45.05	45.04		90.09
Total Personnel Services – Employee Benefits	\$56.53	\$56.51		\$113.04
Total 1450 Instructional Programs Outside the Established School Day	\$206.53	\$206.51		\$413.04

LEA : 121136603 Panther Valley SD

Printed 11/3/2017 12:08:59 PM

General Fund (10)				
1490 Additional Other Instructional Programs	<u>Elementary</u>	<u>Secondary</u>	<u>Federal</u>	<u>Total</u>
100 <u>Personnel Services – Salaries</u>				
100 Personnel Services – Salaries	121,236.98	121,236.97	517,033.19	759,507.14
Total Personnel Services – Salaries	\$121,236.98	\$121,236.97	\$517,033.19	\$759,507.14
200 <u>Personnel Services – Employee Benefits</u>				
210 Group Insurance – Contracted Provider	5,934.19	5,934.19	157,118.11	168,986.49
220 Social Security Contributions	8,427.04	8,427.02	39,994.67	56,848.73
230 PSERS Retirement Contributions	32,651.32	32,651.32	160,546.91	225,849.55
Total Personnel Services – Employee Benefits	\$47,012.55	\$47,012.53	\$357,659.69	\$451,684.77
300 <u>Purchased Professional and Technical Services</u>				
329 Professional Educational Services – Other	20,259.68	20,259.67		40,519.35
Total Purchased Professional and Technical Services	\$20,259.68	\$20,259.67		\$40,519.35
500 <u>Other Purchased Services</u>				
510 Student Transportation Services	2,563.44	2,563.43		5,126.87
Total Other Purchased Services	\$2,563.44	\$2,563.43		\$5,126.87
600 <u>Supplies</u>				
610 General Supplies			17,105.21	17,105.21
Total Supplies			\$17,105.21	\$17,105.21
800 <u>Other Objects</u>				
810 Dues and Fees			14,000.01	14,000.01
Total Other Objects			\$14,000.01	\$14,000.01
Total 1490 Additional Other Instructional Programs	\$191,072.65	\$191,072.60	\$905,798.10	\$1,287,943.35

LEA : 121136603 Panther Valley SD

Printed 11/3/2017 12:08:59 PM

General Fund (10)

1600 Adult Education Programs

Elementary

Secondary

Federal

Total

500 Other Purchased Services

566 Tuition To Institutions of Higher Education and Technical Institutes

134,833.00

Total Other Purchased Services				\$134,833.00
Total 1600 Adult Education Programs				\$134,833.00

LEA : 121136603 Panther Valley SD

Printed 11/3/2017 12:09:01 PM

General Fund (10)

2000 Support Services		Total
100 <u>Personnel Services – Salaries</u>		
100 Personnel Services – Salaries		1,499,858.41
Total Personnel Services – Salaries		\$1,499,858.41
200 <u>Personnel Services – Employee Benefits</u>		
210 Group Insurance – Contracted Provider		461,080.44
220 Social Security Contributions		116,342.87
230 PSERS Retirement Contributions		445,626.26
240 Tuition Reimbursement		16,397.00
250 Unemployment Compensation		10,224.67
299 All Other Employee Benefits		150.00
Total Personnel Services – Employee Benefits		\$1,049,821.24
300 <u>Purchased Professional and Technical Services</u>		
310 Official / Administrative Services		98,113.58
330 Other Professional Services		447,203.63
340 Technical Services		58,920.50
390 Other Purchased Professional and Technical Services		608,835.49
Total Purchased Professional and Technical Services		\$1,213,073.20
400 <u>Purchased Property Services</u>		
410 Cleaning Services		42,334.69
420 Utility Services		207,647.90
430 Repairs and Maintenance Services		22,070.18
Total Purchased Property Services		\$272,052.77
500 <u>Other Purchased Services</u>		
513 Contracted Carriers		1,099,529.69
516 Student Transportation Services From the IU		370,315.89
519 Student Transportation Services From Other Sources		110,334.89
520 Insurance – General		15,223.08
523 General Property and Liability Insurance		86,832.00
530 Communications		54,968.77
549 Other Advertising/Public Relations		5,061.58
550 Printing and Binding		29,877.03
580 Travel		1,131.76
595 IU Payments By Withholding		10,157.86
Total Other Purchased Services		\$1,783,432.55
600 <u>Supplies</u>		
610 General Supplies		259,528.55
620 Energy		82,230.40
630 Food		825.00
640 Books and Periodicals		4,327.90
Total Supplies		\$346,911.85
700 <u>Property</u>		
752 Capital Equipment – Original and Additional		70,844.54
762 Capitalized Equipment - Replacement		19,528.01

LEA : 121136603 Panther Valley SD

Printed 11/3/2017 12:09:01 PM

General Fund (10)

2000 Support Services

		<u>Total</u>
Total Property		\$90,372.55
800 <u>Other Objects</u>		
810 Dues and Fees		72,906.65
890 Miscellaneous Expenditures		7,535.92
Total Other Objects		\$80,442.57
Total 2000 Support Services		\$6,335,965.14

LEA : 121136603 Panther Valley SD

Printed 11/3/2017 12:09:01 PM

General Fund (10)

2100 Support Services – Students	Elementary	Secondary	Federal	Total
100 <u>Personnel Services – Salaries</u>				
100 Personnel Services – Salaries	143,219.28	185,814.58		335,216.50
Total Personnel Services – Salaries	\$143,219.28	\$185,814.58		\$335,216.50
200 <u>Personnel Services – Employee Benefits</u>				
210 Group Insurance – Contracted Provider	44,549.75	44,916.63		92,063.46
220 Social Security Contributions	10,706.19	13,968.17		25,132.10
230 PSERS Retirement Contributions	42,975.96	55,716.65		100,549.24
Total Personnel Services – Employee Benefits	\$98,231.90	\$114,601.45		\$217,744.80
500 <u>Other Purchased Services</u>				
530 Communications		653.53		653.53
580 Travel		541.25		541.25
Total Other Purchased Services		\$1,194.78		\$1,194.78
600 <u>Supplies</u>				
610 General Supplies	205.05			205.05
Total Supplies	\$205.05			\$205.05
Total 2100 Support Services – Students	\$241,656.23	\$301,610.81		\$554,361.13

LEA : 121136603 Panther Valley SD

Printed 11/3/2017 12:09:01 PM

General Fund (10)				
2120 Guidance Services	<u>Elementary</u>	<u>Secondary</u>	<u>Federal</u>	<u>Total</u>
100 <u>Personnel Services – Salaries</u>				
100 Personnel Services – Salaries	111,546.59	154,141.89		265,688.48
Total Personnel Services – Salaries	\$111,546.59	\$154,141.89		\$265,688.48
200 <u>Personnel Services – Employee Benefits</u>				
210 Group Insurance – Contracted Provider	40,309.35	40,676.24		80,985.59
220 Social Security Contributions	8,330.95	11,592.94		19,923.89
230 PSERS Retirement Contributions	33,464.67	46,205.36		79,670.03
Total Personnel Services – Employee Benefits	\$82,104.97	\$98,474.54		\$180,579.51
500 <u>Other Purchased Services</u>				
530 Communications		653.53		653.53
580 Travel		541.25		541.25
Total Other Purchased Services		\$1,194.78		\$1,194.78
600 <u>Supplies</u>				
610 General Supplies	205.05			205.05
Total Supplies	\$205.05			\$205.05
Total 2120 Guidance Services	\$193,856.61	\$253,811.21		\$447,667.82

LEA : 121136603 Panther Valley SD

Printed 11/3/2017 12:09:01 PM

General Fund (10)

2140 Psychological Services	<u>Elementary</u>	<u>Secondary</u>	<u>Federal</u>	<u>Total</u>
100 <u>Personnel Services – Salaries</u>				
100 Personnel Services – Salaries	31,672.69	31,672.69		63,345.38
Total Personnel Services – Salaries	\$31,672.69	\$31,672.69		\$63,345.38
200 <u>Personnel Services – Employee Benefits</u>				
210 Group Insurance – Contracted Provider	4,240.40	4,240.39		8,480.79
220 Social Security Contributions	2,375.24	2,375.23		4,750.47
230 PSERS Retirement Contributions	9,511.29	9,511.29		19,022.58
Total Personnel Services – Employee Benefits	\$16,126.93	\$16,126.91		\$32,253.84
Total 2140 Psychological Services	\$47,799.62	\$47,799.60		\$95,599.22

LEA : 121136603 Panther Valley SD

Printed 11/3/2017 12:09:01 PM

General Fund (10)

2170 Student Accounting Services

Elementary Secondary Federal Total

100 Personnel Services – Salaries

100 Personnel Services – Salaries 6,182.64

Total Personnel Services – Salaries \$6,182.64

200 Personnel Services – Employee Benefits

210 Group Insurance – Contracted Provider 2,597.08

220 Social Security Contributions 457.74

230 PSERS Retirement Contributions 1,856.63

Total Personnel Services – Employee Benefits \$4,911.45

Total 2170 Student Accounting Services \$11,094.09

LEA : 121136603 Panther Valley SD

Printed 11/3/2017 12:09:01 PM

General Fund (10)				
2200 Support Services – Instructional Staff	<u>Elementary</u>	<u>Secondary</u>	<u>Federal</u>	<u>Total</u>
100 <u>Personnel Services – Salaries</u>				
100 Personnel Services – Salaries	36,717.74	42,867.73		79,585.47
Total Personnel Services – Salaries	\$36,717.74	\$42,867.73		\$79,585.47
200 <u>Personnel Services – Employee Benefits</u>				
210 Group Insurance – Contracted Provider	8,259.82	8,259.82		16,519.64
220 Social Security Contributions	2,764.80	3,235.27		6,000.07
230 PSERS Retirement Contributions	11,026.33	12,873.17		23,899.50
240 Tuition Reimbursement			16,397.00	16,397.00
Total Personnel Services – Employee Benefits	\$22,050.95	\$24,368.26	\$16,397.00	\$62,816.21
300 <u>Purchased Professional and Technical Services</u>				
390 Other Purchased Professional and Technical Services	38,197.32	40,312.31		78,509.63
Total Purchased Professional and Technical Services	\$38,197.32	\$40,312.31		\$78,509.63
500 <u>Other Purchased Services</u>				
530 Communications	4,601.61	4,601.61		9,203.22
Total Other Purchased Services	\$4,601.61	\$4,601.61		\$9,203.22
600 <u>Supplies</u>				
610 General Supplies	644.02	1,183.80		1,827.82
640 Books and Periodicals	4,032.90	295.00		4,327.90
Total Supplies	\$4,676.92	\$1,478.80		\$6,155.72
700 <u>Property</u>				
752 Capital Equipment – Original and Additional		5,881.66		5,881.66
Total Property		\$5,881.66		\$5,881.66
Total 2200 Support Services – Instructional Staff	\$106,244.54	\$119,510.37	\$16,397.00	\$242,151.91

LEA : 121136603 Panther Valley SD

Printed 11/3/2017 12:09:01 PM

General Fund (10)				
2240 Computer-Assisted Instruction Support Services	<u>Elementary</u>	<u>Secondary</u>	<u>Federal</u>	<u>Total</u>
100 <u>Personnel Services – Salaries</u>				
100 Personnel Services – Salaries	33,317.74	33,317.73		66,635.47
Total Personnel Services – Salaries	\$33,317.74	\$33,317.73		\$66,635.47
200 <u>Personnel Services – Employee Benefits</u>				
210 Group Insurance – Contracted Provider	8,259.82	8,259.82		16,519.64
220 Social Security Contributions	2,504.68	2,504.68		5,009.36
230 PSERS Retirement Contributions	10,005.29	10,005.29		20,010.58
Total Personnel Services – Employee Benefits	\$20,769.79	\$20,769.79		\$41,539.58
300 <u>Purchased Professional and Technical Services</u>				
390 Other Purchased Professional and Technical Services	38,197.32	40,312.31		78,509.63
Total Purchased Professional and Technical Services	\$38,197.32	\$40,312.31		\$78,509.63
500 <u>Other Purchased Services</u>				
530 Communications	4,601.61	4,601.61		9,203.22
Total Other Purchased Services	\$4,601.61	\$4,601.61		\$9,203.22
600 <u>Supplies</u>				
610 General Supplies	644.02	1,183.80		1,827.82
Total Supplies	\$644.02	\$1,183.80		\$1,827.82
700 <u>Property</u>				
752 Capital Equipment – Original and Additional		5,881.66		5,881.66
Total Property		\$5,881.66		\$5,881.66
Total 2240 Computer-Assisted Instruction Support Services	\$97,530.48	\$106,066.90		\$203,597.38

LEA : 121136603 Panther Valley SD

Printed 11/3/2017 12:09:01 PM

General Fund (10)

2250 School Library Services

	<u>Elementary</u>	<u>Secondary</u>	<u>Federal</u>	<u>Total</u>
600 <u>Supplies</u>				
640 Books and Periodicals	4,032.90	295.00		4,327.90
Total Supplies	\$4,032.90	\$295.00		\$4,327.90
Total 2250 School Library Services	\$4,032.90	\$295.00		\$4,327.90

LEA : 121136603 Panther Valley SD

Printed 11/3/2017 12:09:01 PM

General Fund (10)

2270 Instructional Staff Professional Development Services	<u>Elementary</u>	<u>Secondary</u>	<u>Federal</u>	<u>Total</u>
200 <u>Personnel Services – Employee Benefits</u>				
240 Tuition Reimbursement			16,397.00	16,397.00
Total Personnel Services – Employee Benefits			\$16,397.00	\$16,397.00
Total 2270 Instructional Staff Professional Development Services			\$16,397.00	\$16,397.00

LEA : 121136603 Panther Valley SD

Printed 11/3/2017 12:09:01 PM

General Fund (10)				
2290 Other Instructional Staff Services	<u>Elementary</u>	<u>Secondary</u>	<u>Federal</u>	<u>Total</u>
100 <u>Personnel Services – Salaries</u>				
100 Personnel Services – Salaries	3,400.00	9,550.00		12,950.00
Total Personnel Services – Salaries	\$3,400.00	\$9,550.00		\$12,950.00
200 <u>Personnel Services – Employee Benefits</u>				
220 Social Security Contributions	260.12	730.59		990.71
230 PSERS Retirement Contributions	1,021.04	2,867.88		3,888.92
Total Personnel Services – Employee Benefits	\$1,281.16	\$3,598.47		\$4,879.63
Total 2290 Other Instructional Staff Services	\$4,681.16	\$13,148.47		\$17,829.63

LEA : 121136603 Panther Valley SD

Printed 11/3/2017 12:09:01 PM

General Fund (10)				
2300 Support Services – Administration	<u>Elementary</u>	<u>Secondary</u>	<u>Federal</u>	<u>Total</u>
100 <u>Personnel Services – Salaries</u>				
100 Personnel Services – Salaries	192,435.14	192,435.12		537,611.96
Total Personnel Services – Salaries	\$192,435.14	\$192,435.12		\$537,611.96
200 <u>Personnel Services – Employee Benefits</u>				
210 Group Insurance – Contracted Provider	69,533.96	69,533.94		192,182.14
220 Social Security Contributions	14,391.70	14,391.68		44,284.28
230 PSERS Retirement Contributions	57,338.09	57,338.06		158,064.44
Total Personnel Services – Employee Benefits	\$141,263.75	\$141,263.68		\$394,530.86
300 <u>Purchased Professional and Technical Services</u>				
310 Official / Administrative Services				98,113.58
330 Other Professional Services				441,203.63
340 Technical Services	18,189.00	18,189.00		36,378.00
Total Purchased Professional and Technical Services	\$18,189.00	\$18,189.00		\$575,695.21
500 <u>Other Purchased Services</u>				
530 Communications	262.15	322.46		1,751.19
549 Other Advertising/Public Relations			5,061.58	5,061.58
550 Printing and Binding				29,877.03
Total Other Purchased Services	\$262.15	\$322.46	\$5,061.58	\$36,689.80
600 <u>Supplies</u>				
610 General Supplies	10,829.74	11,520.45		22,827.14
630 Food				825.00
Total Supplies	\$10,829.74	\$11,520.45		\$23,652.14
700 <u>Property</u>				
762 Capitalized Equipment - Replacement		3,797.75		3,797.75
Total Property		\$3,797.75		\$3,797.75
800 <u>Other Objects</u>				
810 Dues and Fees	287.50	3,437.50		21,389.68
890 Miscellaneous Expenditures				110.00
Total Other Objects	\$287.50	\$3,437.50		\$21,499.68
Total 2300 Support Services – Administration	\$363,267.28	\$370,965.96	\$5,061.58	\$1,593,477.40

LEA : 121136603 Panther Valley SD

Printed 11/3/2017 12:09:01 PM

General Fund (10)				
2310 Board Services				
	<u>Elementary</u>	<u>Secondary</u>	<u>Federal</u>	<u>Total</u>
100 <u>Personnel Services – Salaries</u>				
100 Personnel Services – Salaries				275.00
Total Personnel Services – Salaries				\$275.00
200 <u>Personnel Services – Employee Benefits</u>				
220 Social Security Contributions				21.04
Total Personnel Services – Employee Benefits				\$21.04
300 <u>Purchased Professional and Technical Services</u>				
330 Other Professional Services				23,123.00
Total Purchased Professional and Technical Services				\$23,123.00
500 <u>Other Purchased Services</u>				
549 Other Advertising/Public Relations			5,061.58	5,061.58
Total Other Purchased Services			\$5,061.58	\$5,061.58
800 <u>Other Objects</u>				
810 Dues and Fees				12,317.68
Total Other Objects				\$12,317.68
Total 2310 Board Services			\$5,061.58	\$40,798.30

LEA : 121136603 Panther Valley SD

Printed 11/3/2017 12:09:01 PM

General Fund (10)

2320 Board Treasurer Services

<u>Elementary</u>	<u>Secondary</u>	<u>Federal</u>	<u>Total</u>
-------------------	------------------	----------------	--------------

100 Personnel Services – Salaries

100 Personnel Services – Salaries				137.50
-----------------------------------	--	--	--	--------

Total Personnel Services – Salaries				\$137.50
--	--	--	--	-----------------

200 Personnel Services – Employee Benefits

220 Social Security Contributions				10.52
-----------------------------------	--	--	--	-------

Total Personnel Services – Employee Benefits				\$10.52
---	--	--	--	----------------

Total 2320 Board Treasurer Services				\$148.02
--	--	--	--	-----------------

LEA : 121136603 Panther Valley SD

Printed 11/3/2017 12:09:01 PM

General Fund (10)				
2330 Tax Assessment and Collection Services	<u>Elementary</u>	<u>Secondary</u>	<u>Federal</u>	<u>Total</u>
200 <u>Personnel Services – Employee Benefits</u>				
220 Social Security Contributions				3,966.22
Total Personnel Services – Employee Benefits				\$3,966.22
300 <u>Purchased Professional and Technical Services</u>				
310 Official / Administrative Services				98,113.58
Total Purchased Professional and Technical Services				\$98,113.58
500 <u>Other Purchased Services</u>				
530 Communications				1,166.58
550 Printing and Binding				29,877.03
Total Other Purchased Services				\$31,043.61
800 <u>Other Objects</u>				
890 Miscellaneous Expenditures				110.00
Total Other Objects				\$110.00
Total 2330 Tax Assessment and Collection Services				\$133,233.41

LEA : 121136603 Panther Valley SD

Printed 11/3/2017 12:09:01 PM

General Fund (10)

2350 Legal and Accounting Services	<u>Elementary</u>	<u>Secondary</u>	<u>Federal</u>	<u>Total</u>
100 <u>Personnel Services – Salaries</u>				
100 Personnel Services – Salaries				7,750.00
Total Personnel Services – Salaries				\$7,750.00
200 <u>Personnel Services – Employee Benefits</u>				
220 Social Security Contributions				592.80
Total Personnel Services – Employee Benefits				\$592.80
300 <u>Purchased Professional and Technical Services</u>				
330 Other Professional Services				95,413.12
Total Purchased Professional and Technical Services				\$95,413.12
Total 2350 Legal and Accounting Services				\$103,755.92

LEA : 121136603 Panther Valley SD

Printed 11/3/2017 12:09:01 PM

General Fund (10)

2360 Office of the Superintendent / Executive Director Services	<u>Elementary</u>	<u>Secondary</u>	<u>Federal</u>	<u>Total</u>
100 <u>Personnel Services – Salaries</u>				
100 Personnel Services – Salaries				144,579.20
Total Personnel Services – Salaries				\$144,579.20
200 <u>Personnel Services – Employee Benefits</u>				
210 Group Insurance – Contracted Provider				53,114.24
220 Social Security Contributions				10,910.32
230 PSERS Retirement Contributions				43,388.29
Total Personnel Services – Employee Benefits				\$107,412.85
600 <u>Supplies</u>				
610 General Supplies				476.95
630 Food				825.00
Total Supplies				\$1,301.95
800 <u>Other Objects</u>				
810 Dues and Fees				5,347.00
Total Other Objects				\$5,347.00
Total 2360 Office of the Superintendent / Executive Director Services				\$258,641.00

LEA : 121136603 Panther Valley SD

Printed 11/3/2017 12:09:01 PM

General Fund (10)				
2380 Office of the Principal Services	<u>Elementary</u>	<u>Secondary</u>	<u>Federal</u>	<u>Total</u>
100 <u>Personnel Services – Salaries</u>				
100 Personnel Services – Salaries	192,435.14	192,435.12		384,870.26
Total Personnel Services – Salaries	\$192,435.14	\$192,435.12		\$384,870.26
200 <u>Personnel Services – Employee Benefits</u>				
210 Group Insurance – Contracted Provider	69,533.96	69,533.94		139,067.90
220 Social Security Contributions	14,391.70	14,391.68		28,783.38
230 PSERS Retirement Contributions	57,338.09	57,338.06		114,676.15
Total Personnel Services – Employee Benefits	\$141,263.75	\$141,263.68		\$282,527.43
300 <u>Purchased Professional and Technical Services</u>				
340 Technical Services	18,189.00	18,189.00		36,378.00
Total Purchased Professional and Technical Services	\$18,189.00	\$18,189.00		\$36,378.00
500 <u>Other Purchased Services</u>				
530 Communications	262.15	322.46		584.61
Total Other Purchased Services	\$262.15	\$322.46		\$584.61
600 <u>Supplies</u>				
610 General Supplies	10,829.74	11,520.45		22,350.19
Total Supplies	\$10,829.74	\$11,520.45		\$22,350.19
700 <u>Property</u>				
762 Capitalized Equipment - Replacement		3,797.75		3,797.75
Total Property		\$3,797.75		\$3,797.75
800 <u>Other Objects</u>				
810 Dues and Fees	287.50	3,437.50		3,725.00
Total Other Objects	\$287.50	\$3,437.50		\$3,725.00
Total 2380 Office of the Principal Services	\$363,267.28	\$370,965.96		\$734,233.24

LEA : 121136603 Panther Valley SD

Printed 11/3/2017 12:09:01 PM

General Fund (10)

2390 Other Administration Services	<u>Elementary</u>	<u>Secondary</u>	<u>Federal</u>	<u>Total</u>
300 <u>Purchased Professional and Technical Services</u>				
330 Other Professional Services				322,667.51
Total Purchased Professional and Technical Services				\$322,667.51
Total 2390 Other Administration Services				\$322,667.51

LEA : 121136603 Panther Valley SD

Printed 11/3/2017 12:09:01 PM

General Fund (10)				
2400 Support Services – Pupil Health	<u>Elementary</u>	<u>Secondary</u>	<u>Federal</u>	<u>Total</u>
100 <u>Personnel Services – Salaries</u>				
100 Personnel Services – Salaries				170,628.29
Total Personnel Services – Salaries				\$170,628.29
200 <u>Personnel Services – Employee Benefits</u>				
210 Group Insurance – Contracted Provider				28,606.21
220 Social Security Contributions				12,853.95
230 PSERS Retirement Contributions				50,295.08
Total Personnel Services – Employee Benefits				\$91,755.24
300 <u>Purchased Professional and Technical Services</u>				
330 Other Professional Services				6,000.00
Total Purchased Professional and Technical Services				\$6,000.00
500 <u>Other Purchased Services</u>				
530 Communications				2,681.70
Total Other Purchased Services				\$2,681.70
600 <u>Supplies</u>				
610 General Supplies				8,581.08
Total Supplies				\$8,581.08
700 <u>Property</u>				
752 Capital Equipment – Original and Additional				480.00
Total Property				\$480.00
Total 2400 Support Services – Pupil Health				\$280,126.31

LEA : 121136603 Panther Valley SD

Printed 11/3/2017 12:09:01 PM

General Fund (10)

2420 Medical Services

<u>Elementary</u>	<u>Secondary</u>	<u>Federal</u>	<u>Total</u>
-------------------	------------------	----------------	--------------

300 Purchased Professional and Technical Services

330 Other Professional Services			6,000.00
---------------------------------	--	--	----------

Total Purchased Professional and Technical Services			\$6,000.00
--	--	--	-------------------

Total 2420 Medical Services			\$6,000.00
------------------------------------	--	--	-------------------

LEA : 121136603 Panther Valley SD

Printed 11/3/2017 12:09:01 PM

General Fund (10)				
2440 Nursing Services	<u>Elementary</u>	<u>Secondary</u>	<u>Federal</u>	<u>Total</u>
100 <u>Personnel Services – Salaries</u>				
100 Personnel Services – Salaries				170,628.29
Total Personnel Services – Salaries				\$170,628.29
200 <u>Personnel Services – Employee Benefits</u>				
210 Group Insurance – Contracted Provider				28,606.21
220 Social Security Contributions				12,853.95
230 PSERS Retirement Contributions				50,295.08
Total Personnel Services – Employee Benefits				\$91,755.24
500 <u>Other Purchased Services</u>				
530 Communications				2,681.70
Total Other Purchased Services				\$2,681.70
600 <u>Supplies</u>				
610 General Supplies				8,581.08
Total Supplies				\$8,581.08
700 <u>Property</u>				
752 Capital Equipment – Original and Additional				480.00
Total Property				\$480.00
Total 2440 Nursing Services				\$274,126.31

LEA : 121136603 Panther Valley SD

Printed 11/3/2017 12:09:01 PM

General Fund (10)					
2500 Support Services – Business		Elementary	Secondary	Federal	Total
100 <u>Personnel Services – Salaries</u>					
100 Personnel Services – Salaries					190,439.87
Total Personnel Services – Salaries					\$190,439.87
200 <u>Personnel Services – Employee Benefits</u>					
210 Group Insurance – Contracted Provider					85,723.10
220 Social Security Contributions					14,141.04
230 PSERS Retirement Contributions					56,849.37
250 Unemployment Compensation					622.67
Total Personnel Services – Employee Benefits					\$157,336.18
300 <u>Purchased Professional and Technical Services</u>					
340 Technical Services					22,542.50
Total Purchased Professional and Technical Services					\$22,542.50
500 <u>Other Purchased Services</u>					
520 Insurance – General					15,223.08
530 Communications					4,768.24
580 Travel					590.51
Total Other Purchased Services					\$20,581.83
600 <u>Supplies</u>					
610 General Supplies					21,404.60
Total Supplies					\$21,404.60
700 <u>Property</u>					
762 Capitalized Equipment - Replacement					15,730.26
Total Property					\$15,730.26
800 <u>Other Objects</u>					
810 Dues and Fees					5,536.40
890 Miscellaneous Expenditures					7,415.92
Total Other Objects					\$12,952.32
Total 2500 Support Services – Business					\$440,987.56

LEA : 121136603 Panther Valley SD

Printed 11/3/2017 12:09:01 PM

General Fund (10)				
2510 Fiscal Services	<u>Elementary</u>	<u>Secondary</u>	<u>Federal</u>	<u>Total</u>
100 <u>Personnel Services – Salaries</u>				
100 Personnel Services – Salaries				190,439.87
Total Personnel Services – Salaries				\$190,439.87
200 <u>Personnel Services – Employee Benefits</u>				
210 Group Insurance – Contracted Provider				85,723.10
220 Social Security Contributions				14,141.04
230 PSERS Retirement Contributions				56,849.37
250 Unemployment Compensation				622.67
Total Personnel Services – Employee Benefits				\$157,336.18
300 <u>Purchased Professional and Technical Services</u>				
340 Technical Services				22,542.50
Total Purchased Professional and Technical Services				\$22,542.50
500 <u>Other Purchased Services</u>				
520 Insurance – General				15,223.08
530 Communications				4,768.24
580 Travel				590.51
Total Other Purchased Services				\$20,581.83
600 <u>Supplies</u>				
610 General Supplies				2,666.97
Total Supplies				\$2,666.97
800 <u>Other Objects</u>				
810 Dues and Fees				5,536.40
890 Miscellaneous Expenditures				7,415.92
Total Other Objects				\$12,952.32
Total 2510 Fiscal Services				\$406,519.67

LEA : 121136603 Panther Valley SD

Printed 11/3/2017 12:09:01 PM

General Fund (10)				
2511 Supervision of Fiscal Services - Head of Component	<u>Elementary</u>	<u>Secondary</u>	<u>Federal</u>	<u>Total</u>
100 <u>Personnel Services – Salaries</u>				
100 Personnel Services – Salaries				190,439.87
Total Personnel Services – Salaries				\$190,439.87
200 <u>Personnel Services – Employee Benefits</u>				
210 Group Insurance – Contracted Provider				85,723.10
220 Social Security Contributions				14,141.04
230 PSERS Retirement Contributions				56,849.37
250 Unemployment Compensation				622.67
Total Personnel Services – Employee Benefits				\$157,336.18
300 <u>Purchased Professional and Technical Services</u>				
340 Technical Services				22,542.50
Total Purchased Professional and Technical Services				\$22,542.50
500 <u>Other Purchased Services</u>				
520 Insurance – General				15,223.08
530 Communications				4,768.24
580 Travel				590.51
Total Other Purchased Services				\$20,581.83
600 <u>Supplies</u>				
610 General Supplies				2,666.97
Total Supplies				\$2,666.97
800 <u>Other Objects</u>				
810 Dues and Fees				5,536.40
890 Miscellaneous Expenditures				7,415.92
Total Other Objects				\$12,952.32
Total 2511 Supervision of Fiscal Services - Head of Component				\$406,519.67

LEA : 121136603 Panther Valley SD

Printed 11/3/2017 12:09:01 PM

General Fund (10)

2530 Warehousing and Distributing Services	<u>Elementary</u>	<u>Secondary</u>	<u>Federal</u>	<u>Total</u>
600 <u>Supplies</u>				
610 General Supplies				18,737.63
Total Supplies				\$18,737.63
700 <u>Property</u>				
762 Capitalized Equipment - Replacement				15,730.26
Total Property				\$15,730.26
Total 2530 Warehousing and Distributing Services				\$34,467.89

LEA : 121136603 Panther Valley SD

Printed 11/3/2017 12:09:01 PM

General Fund (10)				
2600 Operation and Maintenance of Plant Services	<u>Elementary</u>	<u>Secondary</u>	<u>Federal</u>	<u>Total</u>
100 <u>Personnel Services – Salaries</u>				
100 Personnel Services – Salaries				172,005.12
Total Personnel Services – Salaries				\$172,005.12
200 <u>Personnel Services – Employee Benefits</u>				
210 Group Insurance – Contracted Provider				45,985.89
220 Social Security Contributions				12,832.00
230 PSERS Retirement Contributions				51,652.97
250 Unemployment Compensation				9,602.00
299 All Other Employee Benefits				150.00
Total Personnel Services – Employee Benefits				\$120,222.86
300 <u>Purchased Professional and Technical Services</u>				
390 Other Purchased Professional and Technical Services				530,325.86
Total Purchased Professional and Technical Services				\$530,325.86
400 <u>Purchased Property Services</u>				
410 Cleaning Services				42,334.69
420 Utility Services				207,647.90
430 Repairs and Maintenance Services				22,070.18
Total Purchased Property Services				\$272,052.77
500 <u>Other Purchased Services</u>				
523 General Property and Liability Insurance				86,832.00
530 Communications				35,910.89
Total Other Purchased Services				\$122,742.89
600 <u>Supplies</u>				
610 General Supplies	102,341.43	102,341.43		204,682.86
620 Energy				82,230.40
Total Supplies	\$102,341.43	\$102,341.43		\$286,913.26
700 <u>Property</u>				
752 Capital Equipment – Original and Additional				59,366.54
Total Property				\$59,366.54
800 <u>Other Objects</u>				
810 Dues and Fees				45,980.57
Total Other Objects				\$45,980.57
Total 2600 Operation and Maintenance of Plant Services	\$102,341.43	\$102,341.43		\$1,609,609.87

LEA : 121136603 Panther Valley SD

Printed 11/3/2017 12:09:01 PM

General Fund (10)				
2610 Supervision of Operation and Maintenance of Plant Services	<u>Elementary</u>	<u>Secondary</u>	<u>Federal</u>	<u>Total</u>
100 <u>Personnel Services – Salaries</u>				
100 Personnel Services – Salaries				172,005.12
Total Personnel Services – Salaries				\$172,005.12
200 <u>Personnel Services – Employee Benefits</u>				
210 Group Insurance – Contracted Provider				45,985.89
220 Social Security Contributions				12,832.00
230 PSERS Retirement Contributions				51,652.97
250 Unemployment Compensation				9,602.00
299 All Other Employee Benefits				150.00
Total Personnel Services – Employee Benefits				\$120,222.86
300 <u>Purchased Professional and Technical Services</u>				
390 Other Purchased Professional and Technical Services				530,325.86
Total Purchased Professional and Technical Services				\$530,325.86
400 <u>Purchased Property Services</u>				
410 Cleaning Services				42,334.69
420 Utility Services				207,647.90
430 Repairs and Maintenance Services				22,070.18
Total Purchased Property Services				\$272,052.77
500 <u>Other Purchased Services</u>				
523 General Property and Liability Insurance				86,832.00
530 Communications				35,910.89
Total Other Purchased Services				\$122,742.89
600 <u>Supplies</u>				
610 General Supplies	102,341.43	102,341.43		204,682.86
620 Energy				82,230.40
Total Supplies	\$102,341.43	\$102,341.43		\$286,913.26
700 <u>Property</u>				
752 Capital Equipment – Original and Additional				59,366.54
Total Property				\$59,366.54
800 <u>Other Objects</u>				
810 Dues and Fees				45,980.57
Total Other Objects				\$45,980.57
Total 2610 Supervision of Operation and Maintenance of Plant Services	\$102,341.43	\$102,341.43		\$1,609,609.87

LEA : 121136603 Panther Valley SD

Printed 11/3/2017 12:09:01 PM

General Fund (10)				
2611 Supervision of Operation and Maintenance of Plant Services – Head of Component	<u>Elementary</u>	<u>Secondary</u>	<u>Federal</u>	<u>Total</u>
100 <u>Personnel Services – Salaries</u>				
100 Personnel Services – Salaries				172,005.12
Total Personnel Services – Salaries				\$172,005.12
200 <u>Personnel Services – Employee Benefits</u>				
210 Group Insurance – Contracted Provider				45,985.89
220 Social Security Contributions				12,832.00
230 PSERS Retirement Contributions				51,652.97
250 Unemployment Compensation				9,602.00
299 All Other Employee Benefits				150.00
Total Personnel Services – Employee Benefits				\$120,222.86
300 <u>Purchased Professional and Technical Services</u>				
390 Other Purchased Professional and Technical Services				530,325.86
Total Purchased Professional and Technical Services				\$530,325.86
400 <u>Purchased Property Services</u>				
410 Cleaning Services				42,334.69
420 Utility Services				207,647.90
430 Repairs and Maintenance Services				22,070.18
Total Purchased Property Services				\$272,052.77
500 <u>Other Purchased Services</u>				
523 General Property and Liability Insurance				86,832.00
530 Communications				35,910.89
Total Other Purchased Services				\$122,742.89
600 <u>Supplies</u>				
610 General Supplies	102,341.43	102,341.43		204,682.86
620 Energy				82,230.40
Total Supplies	\$102,341.43	\$102,341.43		\$286,913.26
700 <u>Property</u>				
752 Capital Equipment – Original and Additional				59,366.54
Total Property				\$59,366.54
800 <u>Other Objects</u>				
810 Dues and Fees				45,980.57
Total Other Objects				\$45,980.57
Total 2611 Supervision of Operation and Maintenance of Plant Services – Head of Component	\$102,341.43	\$102,341.43		\$1,609,609.87

LEA : 121136603 Panther Valley SD

Printed 11/3/2017 12:09:01 PM

General Fund (10)

2700 Student Transportation Services	<u>Elementary</u>	<u>Secondary</u>	<u>Federal</u>	<u>Total</u>
100 <u>Personnel Services – Salaries</u>				
100 Personnel Services – Salaries				14,371.20
Total Personnel Services – Salaries				\$14,371.20
200 <u>Personnel Services – Employee Benefits</u>				
220 Social Security Contributions				1,099.43
230 PSERS Retirement Contributions				4,315.66
Total Personnel Services – Employee Benefits				\$5,415.09
500 <u>Other Purchased Services</u>				
513 Contracted Carriers				1,099,529.69
516 Student Transportation Services From the IU				370,315.89
519 Student Transportation Services From Other Sources				110,334.89
Total Other Purchased Services				\$1,580,180.47
700 <u>Property</u>				
752 Capital Equipment – Original and Additional				5,116.34
Total Property				\$5,116.34
Total 2700 Student Transportation Services				\$1,605,083.10

LEA : 121136603 Panther Valley SD

Printed 11/3/2017 12:09:01 PM

General Fund (10)				
2710 Supervision of Student Transportation Services	<u>Elementary</u>	<u>Secondary</u>	<u>Federal</u>	<u>Total</u>
100 <u>Personnel Services – Salaries</u>				
100 Personnel Services – Salaries				14,371.20
Total Personnel Services – Salaries				\$14,371.20
200 <u>Personnel Services – Employee Benefits</u>				
220 Social Security Contributions				1,099.43
230 PSERS Retirement Contributions				4,315.66
Total Personnel Services – Employee Benefits				\$5,415.09
500 <u>Other Purchased Services</u>				
513 Contracted Carriers				960,460.69
516 Student Transportation Services From the IU				370,315.89
519 Student Transportation Services From Other Sources				110,334.89
Total Other Purchased Services				\$1,441,111.47
700 <u>Property</u>				
752 Capital Equipment – Original and Additional				5,116.34
Total Property				\$5,116.34
Total 2710 Supervision of Student Transportation Services				\$1,466,014.10

LEA : 121136603 Panther Valley SD

Printed 11/3/2017 12:09:01 PM

General Fund (10)				
2711 Supervision of Student Transportation Services – Head of Component	<u>Elementary</u>	<u>Secondary</u>	<u>Federal</u>	<u>Total</u>
100 <u>Personnel Services – Salaries</u>				
100 Personnel Services – Salaries				14,371.20
Total Personnel Services – Salaries				\$14,371.20
200 <u>Personnel Services – Employee Benefits</u>				
220 Social Security Contributions				1,099.43
230 PSERS Retirement Contributions				4,315.66
Total Personnel Services – Employee Benefits				\$5,415.09
500 <u>Other Purchased Services</u>				
513 Contracted Carriers				960,460.69
516 Student Transportation Services From the IU				370,315.89
519 Student Transportation Services From Other Sources				110,334.89
Total Other Purchased Services				\$1,441,111.47
700 <u>Property</u>				
752 Capital Equipment – Original and Additional				5,116.34
Total Property				\$5,116.34
Total 2711 Supervision of Student Transportation Services – Head of Component				\$1,466,014.10

LEA : 121136603 Panther Valley SD

Printed 11/3/2017 12:09:01 PM

General Fund (10)

2750 Nonpublic Transportation	<u>Elementary</u>	<u>Secondary</u>	<u>Federal</u>	<u>Total</u>
500 <u>Other Purchased Services</u>				
513 Contracted Carriers				139,069.00
Total Other Purchased Services				\$139,069.00
Total 2750 Nonpublic Transportation				\$139,069.00

LEA : 121136603 Panther Valley SD

Printed 11/3/2017 12:09:01 PM

General Fund (10)				
2800 Support Services – Central	<u>Elementary</u>	<u>Secondary</u>	<u>Federal</u>	<u>Total</u>
800 <u>Other Objects</u>				
890 Miscellaneous Expenditures				10.00
Total Other Objects				\$10.00
Total 2800 Support Services – Central				\$10.00

LEA : 121136603 Panther Valley SD

Printed 11/3/2017 12:09:01 PM

General Fund (10)				
2830 Staff Services	<u>Elementary</u>	<u>Secondary</u>	<u>Federal</u>	<u>Total</u>
800 <u>Other Objects</u>				
890 Miscellaneous Expenditures				10.00
Total Other Objects				\$10.00
Total 2830 Staff Services				\$10.00

LEA : 121136603 Panther Valley SD

Printed 11/3/2017 12:09:01 PM

General Fund (10)				
2832 Recruitment and Placement Services	<u>Elementary</u>	<u>Secondary</u>	<u>Federal</u>	<u>Total</u>
800 <u>Other Objects</u>				
890 Miscellaneous Expenditures				10.00
Total Other Objects				\$10.00
Total 2832 Recruitment and Placement Services				\$10.00

LEA : 121136603 Panther Valley SD

Printed 11/3/2017 12:09:01 PM

General Fund (10)

2900 Other Support Services	<u>Elementary</u>	<u>Secondary</u>	<u>Federal</u>	<u>Total</u>
500 <u>Other Purchased Services</u>				
595 IU Payments By Withholding				10,157.86
Total Other Purchased Services				\$10,157.86
Total 2900 Other Support Services				\$10,157.86

LEA : 121136603 Panther Valley SD

Printed 11/3/2017 12:09:01 PM

General Fund (10)

2910 Support Services Not Listed Elsewhere In the 2000 Series

Elementary Secondary Federal Total

500 <u>Other Purchased Services</u>				
595 IU Payments By Withholding				10,157.86
Total Other Purchased Services				\$10,157.86
Total 2910 Support Services Not Listed Elsewhere In the 2000 Series				\$10,157.86

LEA : 121136603 Panther Valley SD

Printed 11/3/2017 12:09:03 PM

General Fund (10)	
3000 Operation of Non-Instructional Services	<u>Total</u>
100 <u>Personnel Services – Salaries</u>	
100 Personnel Services – Salaries	190,217.58
Total Personnel Services – Salaries	\$190,217.58
200 <u>Personnel Services – Employee Benefits</u>	
210 Group Insurance – Contracted Provider	20,509.00
220 Social Security Contributions	14,456.53
230 PSERS Retirement Contributions	57,358.61
250 Unemployment Compensation	79.96
Total Personnel Services – Employee Benefits	\$92,404.10
300 <u>Purchased Professional and Technical Services</u>	
390 Other Purchased Professional and Technical Services	98,991.26
Total Purchased Professional and Technical Services	\$98,991.26
400 <u>Purchased Property Services</u>	
430 Repairs and Maintenance Services	17,928.24
Total Purchased Property Services	\$17,928.24
500 <u>Other Purchased Services</u>	
510 Student Transportation Services	20,340.33
520 Insurance – General	19,900.00
580 Travel	2,702.28
Total Other Purchased Services	\$42,942.61
600 <u>Supplies</u>	
610 General Supplies	21,874.05
Total Supplies	\$21,874.05
700 <u>Property</u>	
752 Capital Equipment – Original and Additional	1,668.22
Total Property	\$1,668.22
800 <u>Other Objects</u>	
810 Dues and Fees	9,457.10
890 Miscellaneous Expenditures	6,239.35
Total Other Objects	\$15,696.45
Total 3000 Operation of Non-Instructional Services	\$481,722.51

LEA : 121136603 Panther Valley SD

Printed 11/3/2017 12:09:03 PM

General Fund (10)				
3200 Student Activities	<u>Elementary</u>	<u>Secondary</u>	<u>Federal</u>	<u>Total</u>
100 <u>Personnel Services – Salaries</u>				
100 Personnel Services – Salaries				190,217.58
Total Personnel Services – Salaries				\$190,217.58
200 <u>Personnel Services – Employee Benefits</u>				
210 Group Insurance – Contracted Provider				20,509.00
220 Social Security Contributions				14,456.53
230 PSERS Retirement Contributions				57,358.61
250 Unemployment Compensation				79.96
Total Personnel Services – Employee Benefits				\$92,404.10
300 <u>Purchased Professional and Technical Services</u>				
390 Other Purchased Professional and Technical Services				70,895.00
Total Purchased Professional and Technical Services				\$70,895.00
400 <u>Purchased Property Services</u>				
430 Repairs and Maintenance Services				17,928.24
Total Purchased Property Services				\$17,928.24
500 <u>Other Purchased Services</u>				
510 Student Transportation Services				20,340.33
520 Insurance – General				19,900.00
580 Travel				2,702.28
Total Other Purchased Services				\$42,942.61
600 <u>Supplies</u>				
610 General Supplies				21,874.05
Total Supplies				\$21,874.05
700 <u>Property</u>				
752 Capital Equipment – Original and Additional				1,668.22
Total Property				\$1,668.22
800 <u>Other Objects</u>				
810 Dues and Fees				9,457.10
890 Miscellaneous Expenditures				6,239.35
Total Other Objects				\$15,696.45
Total 3200 Student Activities				\$453,626.25

LEA : 121136603 Panther Valley SD

Printed 11/3/2017 12:09:03 PM

General Fund (10)

3300 Community Services

<u>Elementary</u>	<u>Secondary</u>	<u>Federal</u>	<u>Total</u>
-------------------	------------------	----------------	--------------

300 Purchased Professional and Technical Services

390 Other Purchased Professional and Technical Services			28,096.26
---	--	--	-----------

Total Purchased Professional and Technical Services			\$28,096.26
Total 3300 Community Services			\$28,096.26

LEA : 121136603 Panther Valley SD

Printed 11/3/2017 12:09:05 PM

General Fund (10)

5000 Other Expenditures and Financing Uses		<u>Total</u>
800 <u>Other Objects</u>		
830 Interest		879,580.58
880 Refunds of Prior Years' Receipts		353.00
Total Other Objects		\$879,933.58
900 <u>Other Uses of Funds</u>		
910 Redemption of Principal		22,216,874.69
Total Other Uses of Funds		\$22,216,874.69
Total 5000 Other Expenditures and Financing Uses		\$23,096,808.27

LEA : 121136603 Panther Valley SD

Printed 11/3/2017 12:09:05 PM

General Fund (10)

5100 Debt Service / Other Expenditures and Financing Uses	<u>Elementary</u>	<u>Secondary</u>	<u>Federal</u>	<u>Total</u>
800 <u>Other Objects</u>				
830 Interest				879,580.58
880 Refunds of Prior Years' Receipts				353.00
Total Other Objects				\$879,933.58
900 <u>Other Uses of Funds</u>				
910 Redemption of Principal				22,216,874.69
Total Other Uses of Funds				\$22,216,874.69
Total 5100 Debt Service / Other Expenditures and Financing Uses				\$23,096,808.27

LEA : 121136603 Panther Valley SD

Printed 11/3/2017 12:09:05 PM

General Fund (10)

5110 Debt Service	<u>Elementary</u>	<u>Secondary</u>	<u>Federal</u>	<u>Total</u>
800 <u>Other Objects</u>				
830 Interest				879,580.58
Total Other Objects				\$879,580.58
900 <u>Other Uses of Funds</u>				
910 Redemption of Principal				1,489,959.69
Total Other Uses of Funds				\$1,489,959.69
Total 5110 Debt Service				\$2,369,540.27

LEA : 121136603 Panther Valley SD

Printed 11/3/2017 12:09:05 PM

General Fund (10)

5120 Debt Service – Refunded Bonds	<u>Elementary</u>	<u>Secondary</u>	<u>Federal</u>	<u>Total</u>
900 <u>Other Uses of Funds</u>				
910 Redemption of Principal				20,726,915.00
Total Other Uses of Funds				\$20,726,915.00
Total 5120 Debt Service – Refunded Bonds				\$20,726,915.00

LEA : 121136603 Panther Valley SD

Printed 11/3/2017 12:09:05 PM

General Fund (10)

5130 Refund of Prior Year Revenues / Receipts	<u>Elementary</u>	<u>Secondary</u>	<u>Federal</u>	<u>Total</u>
800 <u>Other Objects</u>				
880 Refunds of Prior Years' Receipts				353.00
Total Other Objects				\$353.00
Total 5130 Refund of Prior Year Revenues / Receipts				\$353.00

LEA : 121136603 Panther Valley SD

Printed 11/3/2017 12:09:04 PM

Other Capital Projects Fund (39)

4000 Facilities Acquisition, Construction and Improvement Services

Total

300 Purchased Professional and Technical Services

330 Other Professional Services	12,499.69
---------------------------------	-----------

Total Purchased Professional and Technical Services	\$12,499.69
--	--------------------

700 Property

720 Buildings	1,640.00
752 Capital Equipment – Original and Additional	32,128.09

Total Property	\$33,768.09
-----------------------	--------------------

Total 4000 Facilities Acquisition, Construction and Improvement Services	\$46,267.78
---	--------------------

LEA : 121136603 Panther Valley SD

Printed 11/3/2017 12:09:04 PM

Other Capital Projects Fund (39)

4500 Building Acquisition and Construction Services – Original and Additional	<u>Elementary</u>	<u>Secondary</u>	<u>Federal</u>	<u>Total</u>
300 <u>Purchased Professional and Technical Services</u>				
330 Other Professional Services				12,499.69
Total Purchased Professional and Technical Services				\$12,499.69
700 <u>Property</u>				
720 Buildings				1,640.00
752 Capital Equipment – Original and Additional				32,128.09
Total Property				\$33,768.09
Total 4500 Building Acquisition and Construction Services – Original and Additional				\$46,267.78

LEA : 121136603 Panther Valley SD

Printed 11/3/2017 12:09:07 PM

	<u>General Fund(10)</u>	<u>Public Purpose Trust(27)</u>	<u>Other Compt Approved</u> <u>(28)</u>	<u>Athletic / Activity(29)</u>	<u>Capital Reserve (690.</u> <u>1850)(31)</u>
1000 Instruction					
1100 Regular Programs - Elementary / Secondary	8,122,109.21				
1200 Special Programs - Elementary / Secondary	6,014,704.35				
1300 Vocational Education	1,362,646.45				
1400 Other Instructional Programs - Elementary / Secondary	1,370,398.62				
1600 Adult Education Programs	134,833.00				
Total Instruction	\$17,004,691.63				
2000 Support Services					
2100 Support Services - Students	554,361.13				
2200 Support Services - Instructional Staff	242,151.91				
2300 Support Services - Administration	1,593,477.40				
2400 Support Services - Pupil Health	280,126.31				
2500 Support Services - Business	440,987.56				
2600 Operation and Maintenance of Plant Services	1,609,609.87				
2700 Student Transportation Services	1,605,083.10				
2800 Support Services - Central	10.00				
2900 Other Support Services	10,157.86				
Total Support Services	\$6,335,965.14				
3000 Operation of Non-Instructional Services					
3200 Student Activities	453,626.25				
3300 Community Services	28,096.26				
Total Operation of Non-Instructional Services	\$481,722.51				
4000 Facilities Acquisition, Construction and Improvement Services					
4500 Building Acquisition and Construction Services - Original and Additional					
Total Facilities Acquisition, Construction and Improvement Services					
5000 Other Expenditures and Financing Uses					
5100 Debt Service / Other Expenditures and Financing Uses	23,096,808.27				
Total Other Expenditures and Financing Uses	\$23,096,808.27				
TOTAL ACTUAL EXPENDITURES & OTHER FINANCING USES	\$46,919,187.55				

LEA : 121136603 Panther Valley SD

Printed 11/3/2017 12:09:07 PM

	<u>Capital Reserve (1431)(32)</u>	<u>Other Capital Projects Fund(39)</u>	<u>Debt Service(40)</u>	<u>Permanent(90)</u>	<u>Total</u>
1000 Instruction					
1100 Regular Programs - Elementary / Secondary					8,122,109.21
1200 Special Programs - Elementary / Secondary					6,014,704.35
1300 Vocational Education					1,362,646.45
1400 Other Instructional Programs - Elementary / Secondary					1,370,398.62
1600 Adult Education Programs					134,833.00
Total Instruction					\$17,004,691.63
2000 Support Services					
2100 Support Services - Students					554,361.13
2200 Support Services - Instructional Staff					242,151.91
2300 Support Services - Administration					1,593,477.40
2400 Support Services - Pupil Health					280,126.31
2500 Support Services - Business					440,987.56
2600 Operation and Maintenance of Plant Services					1,609,609.87
2700 Student Transportation Services					1,605,083.10
2800 Support Services - Central					10.00
2900 Other Support Services					10,157.86
Total Support Services					\$6,335,965.14
3000 Operation of Non-Instructional Services					
3200 Student Activities					453,626.25
3300 Community Services					28,096.26
Total Operation of Non-Instructional Services					\$481,722.51
4000 Facilities Acquisition, Construction and Improvement Services					
4500 Building Acquisition and Construction Services - Original and Additional		46,267.78			46,267.78
Total Facilities Acquisition, Construction and Improvement Services		\$46,267.78			\$46,267.78
5000 Other Expenditures and Financing Uses					
5100 Debt Service / Other Expenditures and Financing Uses					23,096,808.27
Total Other Expenditures and Financing Uses					\$23,096,808.27
TOTAL ACTUAL EXPENDITURES & OTHER FINANCING USES		\$46,267.78			\$46,965,455.33

LEA : 121136603 Panther Valley SD

Printed 11/3/2017 12:09:13 PM

PSERS Salary Data (Salary Data should relate to the General Fund only)

Amount	Description	Amount
	Total Salary Base for salaries subject to PSERS withholding	8,512,356.84
	Total Federally Funded salaries subject to PSERS withholding	881,574.99

Title I Expenditure Data

Amount	Description	Amount
	Expenditures Funded with Current Title I Funds	718,646.00
	Expenditures Funded with Carry over Title I Funds	
Total	Title I Expenditure Data	\$718,646.00

Title I ARRA Amount

Amount	Description	Amount
	Portion of Total Title I Expenditures funded with ARRA Title I	

Benefits for Staff Relative to Collective Bargaining Agreements

	OBJECT	COVERED	NOT COVERED	TOTAL
10 General Fund	No Self Insurance data to report			
	211 Medical Insurance	2,064,128.49		2,064,128.49
	212 Dental Insurance			
	215 Eye Care Insurance	21,618.67		21,618.67
	216 Prescription Insurance			
	271 Self-Insurance Medical Benefits			
	272 Self-Insurance Dental Benefits			
	275 Self-Insurance Eye Care Benefits			
	276 Self-Insurance Prescription Benefits			
	FUND TOTAL	\$2,085,747.16		\$2,085,747.16
50 Enterprise Fund	No Self Insurance data to report			
	211 Medical Insurance	32,271.24		32,271.24
	212 Dental Insurance			
	215 Eye Care Insurance	1,518.40		1,518.40
	216 Prescription Insurance			
	271 Self-Insurance Medical Benefits			
	272 Self-Insurance Dental Benefits			
	275 Self-Insurance Eye Care Benefits			
	276 Self-Insurance Prescription Benefits			
	FUND TOTAL	\$33,789.64		\$33,789.64
60 Internal Service Fund	No Self Insurance data to report			
	211 Medical Insurance			
	212 Dental Insurance			
	215 Eye Care Insurance			
	216 Prescription Insurance			
	271 Self-Insurance Medical Benefits			
	272 Self-Insurance Dental Benefits			
	275 Self-Insurance Eye Care Benefits			
	276 Self-Insurance Prescription Benefits			
	FUND TOTAL			
Total of All Funds		\$2,119,536.80		\$2,119,536.80

LEA : 121136603 Panther Valley SD

Printed 11/3/2017 12:09:15 PM

Function	Special Education (Prior Year)	Nonspecial Education (Prior Year)	Total (Prior Year)	Special Education (Current Year)	Nonspecial Education (Current Year)	Total (Current Year)
2120 Guidance Services	126,046.92	252,093.83	378,140.75	132,499.60	269,014.35	401,513.95
2140 Psychological Services	91,543.65		91,543.65	95,599.22		95,599.22
2150 Speech Pathology and Audiology Services						
2160 Social Work Services						
2260 Instruction and Curriculum Development Services						
2350 Legal and Accounting Services	37,626.73	42,253.47	79,880.20	39,170.61	64,585.31	103,755.92
2420 Medical Services						
2440 Nursing Services	87,060.64	174,121.27	261,181.91	91,375.44	182,750.87	274,126.31
2700 Student Transportation Services	708,715.73	990,666.15	1,699,381.88	561,548.89	1,043,534.21	1,605,083.10
Total	\$1,050,993.67	\$1,459,134.72	\$2,510,128.39	\$920,193.76	\$1,559,884.74	\$2,480,078.50

LEA : 121136603 Panther Valley SD

Printed 11/3/2017 12:09:16 PM

(PRINCIPAL AMOUNTS ONLY)

GOVERNMENTAL FUNDS/ ACTIVITIES

	Short-Term Borrowing	General Obligation Bonds/Notes	Authority Building Obligations	Other Long-Term Debt	Other Post- Employment Benefits (OPEB)	Compensated Absences	Net Pension Liability	Total
1. Debt at Beginning of Fiscal Year		27,342,000.00			3,513,292.00	133,171.00	27,289,000.00	58,277,463.00
2. Additional Debt Incurred During Year		20,741,000.00			877,321.00	3,227.00	3,634,000.00	25,255,548.00
3. Retirements and Repayments		21,401,800.00						21,401,800.00
4. Debt at End of Fiscal Year		26,681,200.00			4,390,613.00	136,398.00	30,923,000.00	62,131,211.00
5. Accreted Interest at End Of Fiscal Year								
6. Total Debt and Accreted Interest		26,681,200.00			4,390,613.00	136,398.00	30,923,000.00	62,131,211.00
7. Current Portion P&I - Due within 1 year		2,288,000.00						2,288,000.00
8. Interest Paid during current fiscal year		879,579.00						879,579.00

(PRINCIPAL AMOUNTS ONLY)

PROPRIETARY FUNDS

1. Debt at Beginning of Fiscal Year
2. Additional Debt Incurred During Year
3. Retirements and Repayments
4. Debt at End of Fiscal Year
5. Accreted Interest at End Of Fiscal Year
6. Total Debt and Accreted Interest
7. Current Portion P&I - Due within 1 year
8. Interest Paid during current fiscal year

LEA : 121136603 Panther Valley SD

Printed 11/3/2017 12:09:16 PM

Total Principal and Interest Payments Made by Your School - All Funds

Function	Fund		Principal (910)	Principal (920)	Interest (830)	Total (Principal +Interest)	Misc Other Uses (990)
5110	10	General Fund	1,489,959.69		879,580.58	2,369,540.27	
5110	20	Special Revenue Funds					
5110	30	Capital Projects Funds					
5110	40	Debt Service Fund					
5110	90	Permanent Fund					
5120	10	General Fund	20,726,915.00			20,726,915.00	
5120	20	Special Revenue Funds					
5120	30	Capital Projects Funds					
5120	40	Debt Service Fund					
Total Debt Payments - Governmental Funds			\$22,216,874.69		\$879,580.58	\$23,096,455.27	

Function	Fund		Principal (910)	Principal (920)	Interest (830)	Total (Principal +Interest)
5110	50	Enterprise Fund				
5110	60	Internal Service Fund				
5120	50	Enterprise Fund				
5120	60	Internal Service Fund				
Total Debt Payments - Proprietary Funds						

LEA : 121136603 Panther Valley SD

Printed 11/3/2017 12:09:16 PM

Debt Details
Governmental Funds/ Activities

Debt Category	Debt Issue Date (MM/YYYY)	Principal Amounts Only				Current Portion Due Within One Year (Principal and Interest)	Interest Paid During Fiscal Year
		Debt at Beginning of Fiscal Year	Additions	Reductions / Repayments	Debt at End of Fiscal Year		
General Obligation Bonds/Notes – CIB	03/2017		4,357,000.00		4,357,000.00	135,706.00	
General Obligation Bonds/Notes – CIB	03/2017		3,039,000.00		3,039,000.00	106,324.00	
General Obligation Bonds/Notes – CIB	07/2016		6,390,000.00	20,000.00	6,370,000.00	196,724.00	120,600.00
General Obligation Bonds/Notes – CIB	08/2016		6,955,000.00	560,000.00	6,395,000.00	849,600.00	125,668.00
General Obligation Bonds/Notes – CIB	10/2015	3,114,000.00		576,000.00	2,538,000.00	651,776.00	70,367.00
General Obligation Bonds/Notes – CIB	04/2013	2,630,000.00		5,000.00	2,625,000.00	83,970.00	79,047.00
General Obligation Bonds/Notes – CIB	09/2013	5,660,000.00		5,660,000.00			127,316.00
General Obligation Bonds/Notes – CIB	01/2012	4,355,000.00		4,355,000.00			138,825.00
General Obligation Bonds/Notes – CIB	01/2012	3,010,000.00		3,010,000.00			104,675.00
General Obligation Bonds/Notes – CIB	08/2011	7,065,000.00		7,065,000.00			
General Obligation Bonds/Notes – CIB	10/2010	1,508,000.00		150,800.00	1,357,200.00	263,900.00	113,081.00
Compensated Absences		133,171.00	3,227.00		136,398.00		
Other Post-Employment Benefits (OPEB)		3,513,292.00	877,321.00		4,390,613.00		
Net Pension Liability		27,289,000.00	3,634,000.00		30,923,000.00		
Totals for Debt Entered:		\$58,277,463.00	\$25,255,548.00	\$21,401,800.00	\$62,131,211.00	\$2,288,000.00	\$879,579.00

LEA : 121136603 Panther Valley SD

Printed 11/3/2017 12:09:16 PM

General Fund (10)

Section 1: Tuition/Purchased Services as Reported within Expenditure Detail	Amount
Tuition Reported in General Fund Expenditures 1000-560	4,024,973.45
Purchased Services in General Fund Expenditures 1000-594 and 1000-597	
Section 1 Total	\$4,024,973.45

Section 2: Tuition Paid to Institution Types During Fiscal Year	Tuition Paid For Nonspecial Education	Tuition Paid For Special Education	Total
1 1306 Institutions			
2 Institutionalized Children's Programs			
3 Juveniles Incarcerated in Adult Facilities			
4 Residential Treatment Facilities			
5 Other Local Education Agencies	373,224.91	1,161,743.78	1,534,968.69
6 Brick and Mortar Charter Schools			
7 Cyber Charter Schools	753,592.02	695,499.74	1,449,091.76
8 Career and Technology Centers	906,080.00		906,080.00
9 Approved Private Schools			
10 PA Chartered Schools for the Deaf and Blind			
11 Private Residential Rehabilitative Institutions			
12 Juvenile Detention Centers			
13 Special Program Jointures			
14 Other Tuition Not Included Elsewhere In This Section	134,833.00		134,833.00
Section 2 Total	\$2,167,729.93	\$1,857,243.52	\$4,024,973.45

LEA : 121136603 Panther Valley SD

Printed 11/3/2017 12:09:18 PM

Food Service / Cafeteria Operations Fund (51)

3000 Operation of Non-Instructional Services	<u>Total</u>
100 <u>Personnel Services – Salaries</u>	
100 Personnel Services – Salaries	282,686.52
Total Personnel Services – Salaries	\$282,686.52
200 <u>Personnel Services – Employee Benefits</u>	
210 Group Insurance – Contracted Provider	35,041.66
220 Social Security Contributions	21,578.32
230 PSERS Retirement Contributions	83,682.65
299 All Other Employee Benefits	1,325.00
Total Personnel Services – Employee Benefits	\$141,627.63
600 <u>Supplies</u>	
610 General Supplies	4,424.01
620 Energy	677.56
630 Food	512,056.43
Total Supplies	\$517,158.00
700 <u>Property</u>	
740 Depreciation	12,723.65
Total Property	\$12,723.65
800 <u>Other Objects</u>	
890 Miscellaneous Expenditures	205.45
Total Other Objects	\$205.45
Total 3000 Operation of Non-Instructional Services	\$954,401.25

LEA : 121136603 Panther Valley SD

Printed 11/3/2017 12:09:18 PM

Food Service / Cafeteria Operations Fund (51)

3100 Food Services	<u>Elementary</u>	<u>Secondary</u>	<u>Federal</u>	<u>Total</u>
100 <u>Personnel Services – Salaries</u>				
100 Personnel Services – Salaries				282,686.52
Total Personnel Services – Salaries				\$282,686.52
200 <u>Personnel Services – Employee Benefits</u>				
210 Group Insurance – Contracted Provider				35,041.66
220 Social Security Contributions				21,578.32
230 PSERS Retirement Contributions				83,682.65
299 All Other Employee Benefits				1,325.00
Total Personnel Services – Employee Benefits				\$141,627.63
600 <u>Supplies</u>				
610 General Supplies				4,424.01
620 Energy				677.56
630 Food				512,056.43
Total Supplies				\$517,158.00
700 <u>Property</u>				
740 Depreciation				12,723.65
Total Property				\$12,723.65
800 <u>Other Objects</u>				
890 Miscellaneous Expenditures				205.45
Total Other Objects				\$205.45
Total 3100 Food Services				\$954,401.25

	<u>Food Service(51)</u>	<u>Child Care Operations(52)</u>	<u>Other Enterprise(58)</u>	<u>Internal Service(60)</u>	<u>Total</u>
3000 <u>Operation of Non-Instructional Services</u>					
3100 Food Services	954,401.25				954,401.25
Total Operation of Non-Instructional Services	\$954,401.25				\$954,401.25
TOTAL ACTUAL EXPENDITURES & OTHER FINANCING USES	\$954,401.25				\$954,401.25